



**ELECTRONIC COPY**

LG607316038  
Report verification at [igi.org](http://igi.org)



November 19, 2024  
IGI Report Number **LG607316038**  
Description **LABORATORY GROWN DIAMOND**  
Shape and Cutting Style **ROUND BRILLIANT**  
Measurements **7.68 - 7.73 X 4.64 MM**  
**GRADING RESULTS**  
Carat Weight **1.67 CARAT**  
Color Grade **FANCY PINK**  
Clarity Grade **VS 2**  
Cut Grade **IDEAL**

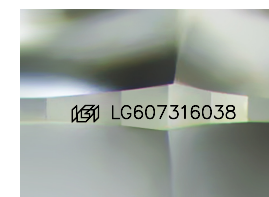
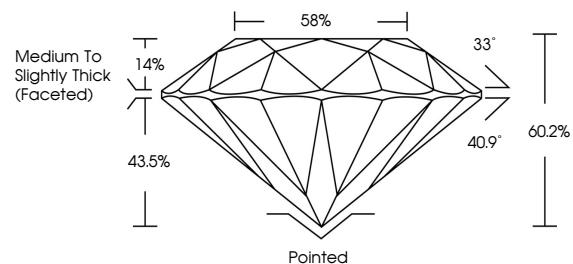
November 19, 2024  
IGI Report Number **LG607316038**  
Description **LABORATORY GROWN DIAMOND**  
Shape and Cutting Style **ROUND BRILLIANT**  
Measurements **7.68 - 7.73 X 4.64 MM**  
**GRADING RESULTS**  
Carat Weight **1.67 CARAT**  
Color Grade **FANCY PINK**  
Clarity Grade **VS 2**  
Cut Grade **IDEAL**

**ADDITIONAL GRADING INFORMATION**

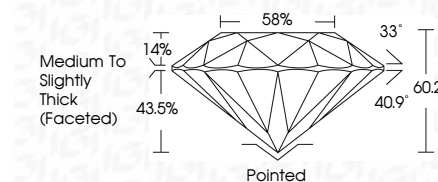
Polish **EXCELLENT**  
Symmetry **EXCELLENT**  
Fluorescence **STRONG**  
Inscription(s) **LG607316038**

Comments: HEARTS & ARROWS  
This Laboratory Grown Diamond was created by High Pressure High Temperature (HPHT) growth process. Indications of post-growth treatment.

**PROPORTIONS**



Sample Image Used



**COLOR**

D E F G H I J Faint Very Light Light

**CLARITY**

IF	WS <sup>1-2</sup>	VS <sup>1-2</sup>	SI <sup>1-2</sup>	I <sup>1-3</sup>
Internally Flawless	Very Very Slightly Included	Very Slightly Included	Slightly Included	Included

**ADDITIONAL GRADING INFORMATION**

Polish **EXCELLENT**  
Symmetry **EXCELLENT**  
Fluorescence **STRONG**  
Inscription(s) **LG607316038**  
Comments: HEARTS & ARROWS  
This Laboratory Grown Diamond was created by High Pressure High Temperature (HPHT) growth process. Indications of post-growth treatment.



November 19, 2024  
IGI Report No **LG607316038**  
**ROUND BRILLIANT**  
**7.68 - 7.73 X 4.64 MM**  
Carat Weight **1.67 CARAT**  
Color Grade **FANCY PINK**  
Clarity Grade **VS 2**  
Cut Grade **IDEAL**  
Depth **60.2%**  
Table **14%**  
Girdle **58%**  
Medium To Slightly Thick (Faceted)  
Culet **Pointed**  
Polish **EXCELLENT**  
Symmetry **EXCELLENT**  
Fluorescence **STRONG**  
Inscriptions(s) **LG607316038**

Comments: HEARTS & ARROWS  
This Laboratory Grown Diamond was created by High Pressure High Temperature (HPHT) growth process. Indications of post-growth treatment.