



ELECTRONIC COPY

LG607315271

Report verification at igi.org

LABORATORY GROWN DIAMOND REPORT

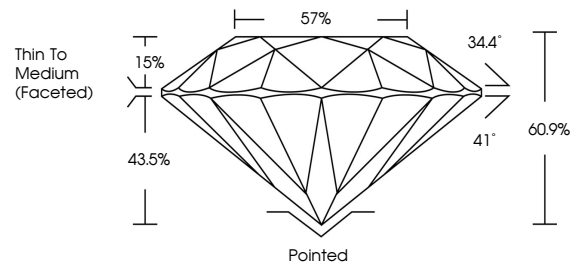
January 17, 2024
 IGI Report Number **LG607315271**
 Description **LABORATORY GROWN
DIAMOND**
 Shape and Cutting Style **ROUND BRILLIANT**
 Measurements **7.92 - 7.97 X 4.84 MM**
GRADING RESULTS
 Carat Weight **1.84 CARAT**
 Color Grade **FANCY VIVID BLUE**
 Clarity Grade **VS 2**
 Cut Grade **IDEAL**

ADDITIONAL GRADING INFORMATION

Polish **EXCELLENT**
 Symmetry **EXCELLENT**
 Fluorescence **NONE**
 Inscription(s) **IGI LG607315271**

Comments: This Laboratory Grown Diamond was created by High Pressure High Temperature (HPHT) growth process.
 Indications of post-growth treatment.

PROPORTIONS



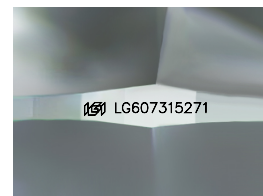
GRADING SCALES

CLARITY

IF	VVS ¹⁻²	VS ¹⁻²	SI ¹⁻²	I ¹⁻³
Internally Flawless	Very Very Slightly Included	Very Slightly Included	Slightly Included	Included

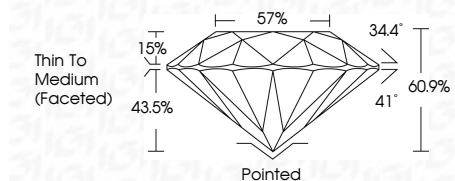
COLOR

D	E	F	G	H	I	J	Faint	Very Light	Light
Light Tint	Fancy Light	Fancy	Fancy Intense	Fancy Vivid					



Sample Image Used

January 17, 2024
 IGI Report Number **LG607315271**
 Description **LABORATORY GROWN
DIAMOND**
 Shape and Cutting Style **ROUND BRILLIANT**
 Measurements **7.92 - 7.97 X 4.84 MM**
GRADING RESULTS
 Carat Weight **1.84 CARAT**
 Color Grade **FANCY VIVID BLUE**
 Clarity Grade **VS 2**
 Cut Grade **IDEAL**



ADDITIONAL GRADING INFORMATION

Polish **EXCELLENT**
 Symmetry **EXCELLENT**
 Fluorescence **NONE**
 Inscription(s) **IGI LG607315271**
 Comments: This Laboratory Grown Diamond was created by High Pressure High Temperature (HPHT) growth process.
 Indications of post-growth treatment.



January 17, 2024
 IGI Report No LG607315271
ROUND BRILLIANT
 1.84 CARAT
 Carat Weight
 Color Grade **FANCY VIVID BLUE**
 Clarity Grade **VS 2**
 Cut Grade **IDEAL**
 Depth **60.9%**
 Table **57%**
 Girdle **Thin To Medium (Faceted)**
 Pavilion **Pointed**
 Polish **EXCELLENT**
 Symmetry **EXCELLENT**
 Fluorescence **NONE**
 Inscription(s) **IGI LG607315271**
 Comments: This Laboratory Grown Diamond was created by High Pressure High Temperature (HPHT) growth process.
 Indications of post-growth treatment.

