

ELECTRONIC COPY

LABORATORY GROWN DIAMOND REPORT

November 1, 2023	
IGI Report Number	LG606363345
Description	LABORATORY GROWN DIAMOND
Shape and Cutting Style	CUT CORNERED RECTANGULAR MODIFIED BRILLIANT
Measurements	7.00 X 5.05 X 3.43 MM

GRADING RESULTS

Carat Weight	1.02 CARAT
Color Grade	E
Clarity Grade	VVS 2

ADDITIONAL GRADING INFORMATION

Polish	EXCELLENT
Symmetry	EXCELLENT
Fluorescence	NONE

Inscription(s) LG606363345

Comments: As Grown - No indication of post-growth treatment.

This Laboratory Grown Diamond was created by High Pressure High Temperature (HPHT) growth process.

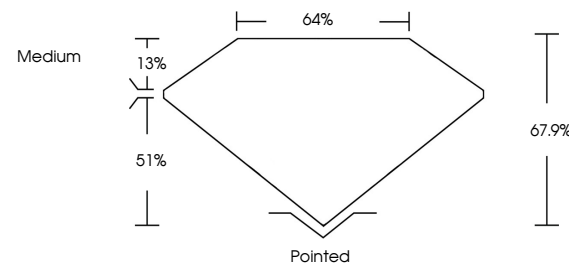
Type II

LABORATORY GROWN DIAMOND REPORT

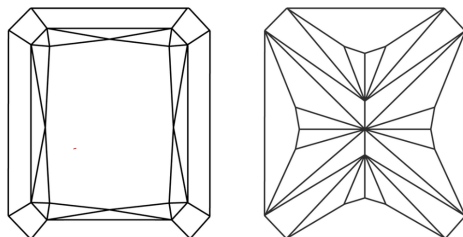
LG606363345

Report verification at igi.org

PROPORTIONS



CLARITY CHARACTERISTICS



KEY TO SYMBOLS

Red symbols indicate internal characteristics.
Green symbols indicate external characteristics.

LABORATORY GROWN
DIAMOND REPORT

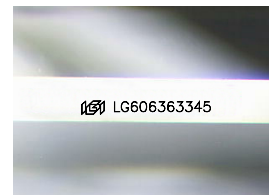
GRADING SCALES

CLARITY

IF	VVS ¹⁻²	VS ¹⁻²	SI ¹⁻²	I ¹⁻³
Internally Flawless	Very Very Slightly Included	Very Slightly Included	Slightly Included	Included

COLOR

D E F G H I J Faint Very Light Light



Sample Image Used



© IGI 2020, International Gemological Institute

FD - 10 20



November 1, 2023	
IGI Report Number	LG606363345
Description	LABORATORY GROWN

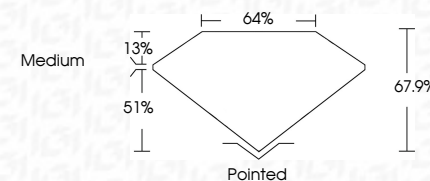
Shape and Cutting Style

CUT CORNERED
RECTANGULAR MODIFIED
BRILLIANT

Measurements 7.00 X 5.05 X 3.43 MM

GRADING RESULTS

Carat Weight	1.02 CARAT
Color Grade	E
Clarity Grade	VVS 2



ADDITIONAL GRADING INFORMATION

Polish	EXCELLENCE
Symmetry	EXCELLENCE
Fluorescence	NON
Inscription(s)	15 LG60636334

Comments: As Grown - No indication of post-growth treatment.

This Laboratory Grown Diamond was created by High Pressure High Temperature (HPHT) growth process.
Type II

November 1, 2023	GI Report No LG405363945	CU CUT CORNERED RECT. MODIFIED BRILLIANT
7.00 CT X 5.05 X 3.43 MM		
Carat Weight	Color Grade	Clarity Grade
E	VVS 2	67.9%
	67.9%	64%
	Medium	
1.02 CARAT		
	Polished	
	EXCELLENT	
	EXCELLENT	
	NONE	
	ISS1 LG405363945	
<p>Comments: 1. No indication of post-growth treatment.</p> <p>2. The Laboratory Growth Diamond was created by High Pressure High Temperature (HPHT) growth process.</p> <p>Type II</p>		

Comments:
As Grown - No Indication of post-growth treatment.
This Laboratory Grown Diamond was created by High Pressure High Temperature (HPHT) growth process.