



ELECTRONIC COPY

LABORATORY GROWN DIAMOND REPORT

October 25, 2023	
IGI Report Number	LG605377674
Description	LABORATORY GROWN DIAMOND
Shape and Cutting Style	CUSHION BRILLIANT
Measurements	7.84 X 6.26 X 4.31 MM

GRADING RESULTS

Carat Weight	1.56 CARAT
Color Grade	E
Clarity Grade	VVS 1

ADDITIONAL GRADING INFORMATION

Polish	EXCELLENT
Symmetry	EXCELLENT
Fluorescence	NONE
Inscription(s)	 LG605377674

Comments: As Grown - No indication of post-growth treatment.

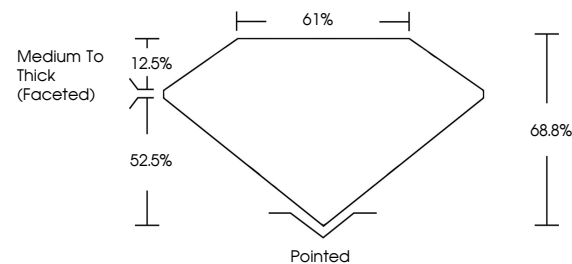
This Laboratory Grown Diamond was created by High Pressure High Temperature (HPHT) growth process.
Type II

LABORATORY GROWN DIAMOND REPORT

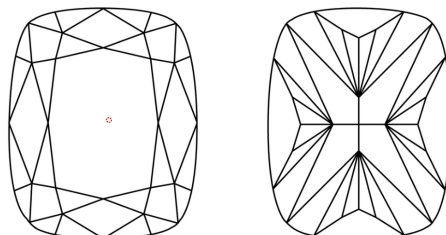
LG605377674

Report verification at igi.org

PROPORTIONS



CLARITY CHARACTERISTICS



KEY TO SYMBOLS

Red symbols indicate internal characteristics.
Green symbols indicate external characteristics.

LABORATORY GROWN
DIAMOND REPORT

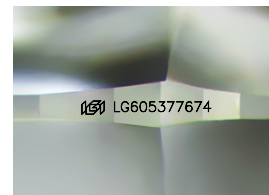
GRADING SCALES

CLARITY

IF	VVS ¹⁻²	VS ¹⁻²	SI ¹⁻²	I ¹⁻³
Internally Flawless	Very Very Slightly Included	Very Slightly Included	Slightly Included	Included

COLOR

D E F G H I J Faint Very Light Light



Sample Image Used

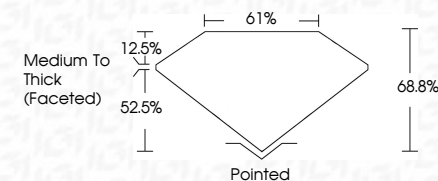


© IGI 2020, International Gemological Institute

FD - 10 20



October 25, 2023	
Report Number	LG605377674
Description	LABORATORY GROWN DIAMOND
Shape and Cutting Style	CUSHION BRILLIANT
Measurements	7.84 X 6.26 X 4.31 MM
GRADING RESULTS	
Gross Weight	1.56 CARAT
Color Grade	E
Clarity Grade	VVS 1



ADDITIONAL GRADING INFORMATION

Polish	EXCELLENT
Symmetry	EXCELLENT
Fluorescence	NONE
Inscription(s)	 LG-605377674

Comments: As Grown - No indication of post-growth treatment.

This Laboratory Grown Diamond was created by High Pressure High Temperature (HPHT) growth process.
Type II

October 26, 2023	GI Report No LG408377674	
FUSION BRILLIANT		
1.56 CARAT	1.56 CARAT	
E	E	
VVS 1	VVS 1	
68.6%	68.6%	
61%	61%	
Medium to Thick (faceted)	Medium to Thick (faceted)	
Polished	Polished	
EXCELLENT	EXCELLENT	
EXCELLENT	EXCELLENT	
NONE	NONE	
#69 LG408377674	#69 LG408377674	
Comments:		
As Grown - No indication of post-growth treatment.		
This is a Very Green Diamond was created by High Pressure High Temperature (HPHT) growth process.		
Type II		

Comments:
As Grown - No indication of post-growth treatment.
This Laboratory Grown Diamond was created by High Pressure High Temperature (HPHT) growth process.