

ELECTRONIC COPY

LABORATORY GROWN DIAMOND REPORT

October 27, 2023	
IGI Report Number	LG605304091
Description	LABORATORY GROWN DIAMOND
Shape and Cutting Style	ROUND BRILLIANT
Measurements	6.92 - 6.94 X 4.18 MM

GRADING RESULTS

Carat Weight	1.24 CARAT
Color Grade	E
Clarity Grade	VS 1
Cut Grade	IDEAL

ADDITIONAL GRADING INFORMATION

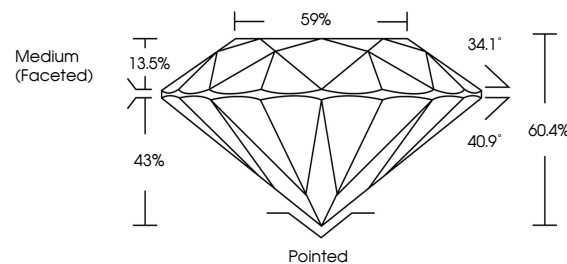
Polish	EXCELLENT
Symmetry	EXCELLENT
Fluorescence	NONE
Inscription(s)	 LG605304091

Comments: This Laboratory Grown Diamond was created by Chemical Vapor Deposition (CVD) growth process and may include post-growth treatment.
Type IIa

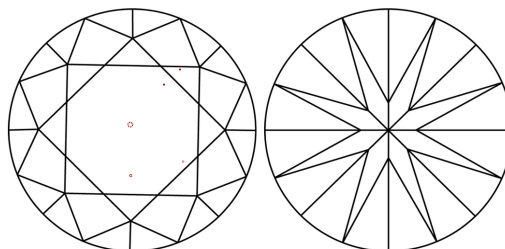
LABORATORY GROWN DIAMOND REPORT

LG605304091
Report verification at lgi.org

PROPORTIONS



CLARITY CHARACTERISTICS



KEY TO SYMBOLS

Red symbols indicate internal characteristics.
Green symbols indicate external characteristics.

LABORATORY GROWN
DIAMOND REPORT

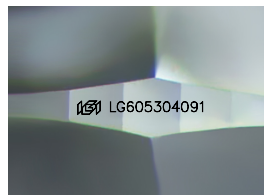
GRADING SCALES

CLARITY

IF	VVS ¹⁻²	VS ¹⁻²	SI ¹⁻²	I ¹⁻³
Internally Flawless	Very Very Slightly Included	Very Slightly Included	Slightly Included	Included

COLOR

D E F G H I J Faint Very Light Light



Sample Image Used



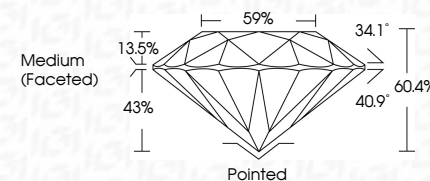
© IGI 2020, International Gemological Institute

FD - 10 20

LABORATORY GROWN DIAMOND REPORT

October 27, 2023	
IGI Report Number	LG605304091
Description	LABORATORY GROWN DIAMOND
Shape and Cutting Style	ROUND BRILLIANT
Measurements	6.92 - 6.94 X 4.18 MM

GRADING RESULTS	
Carat Weight	1.24 CARAT
Color Grade	E
Clarity Grade	VS 1
Cut Grade	IDEAL



ADDITIONAL GRADING INFORMATION

Polish	EXCELLENT
Symmetry	EXCELLENT
Fluorescence	NONE
Inscription(s)	15 LG-605304091

Comments: This Laboratory Grown Diamond was created by Chemical Vapor Deposition (CVD) growth process and may include post-growth treatment.
Type IIa



October 27, 2023	GI Report No LG60304091
ROUND BRILLIANT	
SZ - 6.94 X 4.18 MM	
Carat Weight	1.24 CARAT
Color Grade	E
Clarity Grade	VS 1
Cut Grade	IDEAL
Depth	60.4%
Table	59%
Girdle	Medium (Faced-to)
Culet	Pointed
Polish	EXCELLENT
Symmetry	EXCELLENT
Fluorescence	NONE
Inscriptions(s)	1691 LG60304091
Comments:	
<p>This is a Very Good Diamond was treated by Chemical Vapor Deposition (CVD) growth process and may include post-growth treatment.</p>	
Type IIA	