



LABORATORY GROWN DIAMOND REPORT

GRADING RESULTS

ADDITIONAL GRADING INFORMATION

Comments: This Laboratory Grown Diamond was created by Chemical Vapor Deposition (CVD) growth process and may include post-growth treatment.
Type IIa

LG604385066
Report verification at igi.org

Diagram illustrating the proportions of a diamond shape:

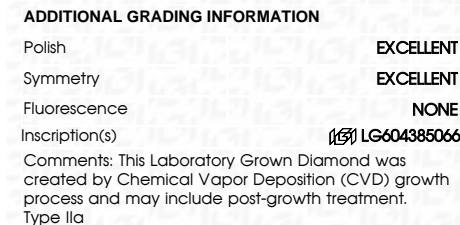
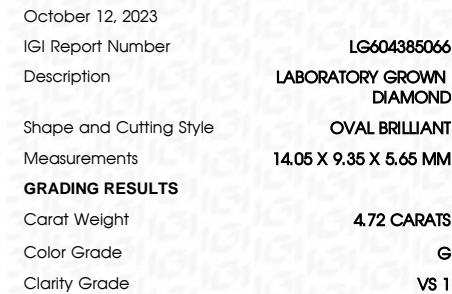
- Top-left facet: Medium (Faceted), 13%
- Width: 61%
- Height: 60.4%
- Bottom-left facet: 43%
- Bottom point: Pointed

Red symbols indicate internal characteristics.
Green symbols indicate external characteristics.

GRADING SCALES

| IF | VVS ¹⁻² | VS ¹⁻² | SI ¹⁻² | I ¹⁻³ |
|---------------------|-----------------------------|------------------------|-------------------|------------------|
| Internally Flawless | Very Very Slightly Included | Very Slightly Included | Slightly Included | Included |

D E F G H I J Faint Very Light Light



FD - 10 20

www.igi.org

THIS DOCUMENT WAS PRODUCED WITH THE FOLLOWING SECURITY MEASURES: SPECIAL DOCUMENT PAPER, INK SCREENS, WATERMARK, BACKGROUND DESIGNS, HOLOGRAM AND OTHER SECURITY FEATURES NOT LISTED AND DO EXCEED DOCUMENT SECURITY INDUSTRY GUIDELINES

October 12, 2023
GI Report No LG604385066
COVAL BRILLIANT

| | | |
|-------------------------------|----------------------------|--------------------|
| 14.05 X 9.35 X 5.65 MM | Carat Weight | 4.72 CARATS |
| Color Grade | G | |
| Clarity Grade | VS 1 | |
| Depth | 60.4% | |
| Table | 61% | |
| Grade | Medium (Faceted) | |
| Culet | Pointed | |
| Patch | EXCELLENT | |
| Symmetry | EXCELLENT | |
| Fluorescence | NONE | |
| Comments: | see 1 carat version | |

Comments:
This Laboratory Grown Diamond was created by Chemical Vapor Deposition (CVD) growth process and may include post-growth treatment.