



**ELECTRONIC COPY**

LG604317725  
Report verification at [igi.org](http://igi.org)



June 28, 2024

IGI Report Number **LG604317725**

Description **LABORATORY GROWN DIAMOND**

Shape and Cutting Style **EMERALD CUT**

Measurements **11.22 X 7.92 X 5.37 MM**

**GRADING RESULTS**

Carat Weight **5.02 CARATS**

Color Grade **FANCY INTENSE BLUE**

Clarity Grade **VS 2**

June 28, 2024

IGI Report Number **LG604317725**

Description **LABORATORY GROWN DIAMOND**

Shape and Cutting Style **EMERALD CUT**

Measurements **11.22 X 7.92 X 5.37 MM**

**GRADING RESULTS**

Carat Weight **5.02 CARATS**

Color Grade **FANCY INTENSE BLUE**

Clarity Grade **VS 2**

**ADDITIONAL GRADING INFORMATION**

Polish **EXCELLENT**

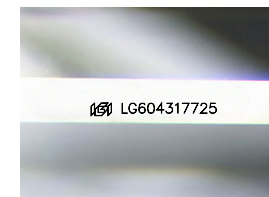
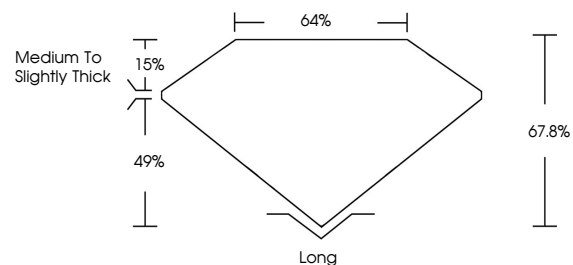
Symmetry **EXCELLENT**

Fluorescence **NONE**

Inscription(s) **LG604317725**

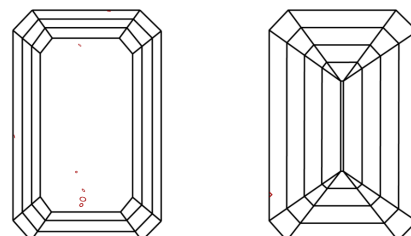
Comments: This Laboratory Grown Diamond was created by Chemical Vapor Deposition (CVD) growth process. Indications of post-growth treatment.

**PROPORTIONS**



Sample Image Used

**CLARITY CHARACTERISTICS**



**KEY TO SYMBOLS**

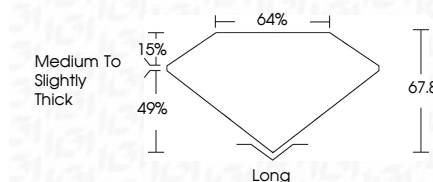
Red symbols indicate internal characteristics.  
Green symbols indicate external characteristics.

**COLOR**

D E F G H I J Faint Very Light Light

**CLARITY**

IF	VS <sup>1-2</sup>	VS <sup>1-2</sup>	SI <sup>1-2</sup>	I <sup>1-3</sup>
Internally Flawless	Very Very Slightly Included	Very Slightly Included	Slightly Included	Included



**ADDITIONAL GRADING INFORMATION**

Polish **EXCELLENT**

Symmetry **EXCELLENT**

Fluorescence **NONE**

Inscription(s) **LG604317725**

Comments: This Laboratory Grown Diamond was created by Chemical Vapor Deposition (CVD) growth process. Indications of post-growth treatment.



**IGI**



June 28, 2024  
IGI Report No **LG604317725**  
**EMERALD CUT**  
Carat Weight **5.02 CARATS**  
Color Grade **FANCY INTENSE BLUE**  
Clarity Grade **VS 2**  
Table **64%**  
Girdle **Medium to Slightly Thick**  
Culet **Long**  
Polish **EXCELLENT**  
Symmetry **EXCELLENT**  
Fluorescence **NONE**  
Inscription(s) **LG604317725**

Comments: This Laboratory Grown Diamond was created by Chemical Vapor Deposition (CVD) growth process. Indications of post-growth treatment.