

ELECTRONIC COPY

LABORATORY GROWN DIAMOND REPORT

October 26, 2023	
IGI Report Number	LG603344734
Description	LABORATORY GROWN DIAMOND
Shape and Cutting Style	ROUND BRILLIANT
Measurements	6.62 - 6.64 X 4.05 MM

GRADING RESULTS

Carat Weight	1.10 CARAT
Color Grade	F
Clarity Grade	VVS 1
Cut Grade	EXCELLENT

ADDITIONAL GRADING INFORMATION

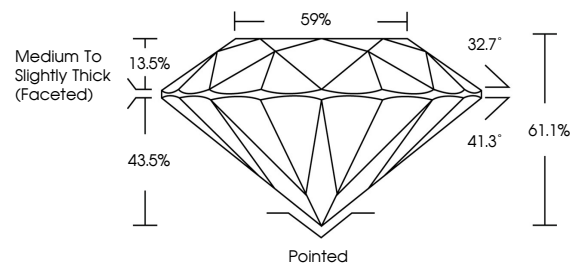
Polish	EXCELLENT
Symmetry	EXCELLENT
Fluorescence	NONE
Inscription(s)	15 LG603344734

Comments: As Grown - No indication of post-growth treatment.
This Laboratory Grown Diamond was created by High Pressure High Temperature (HPHT) growth process.
Type II

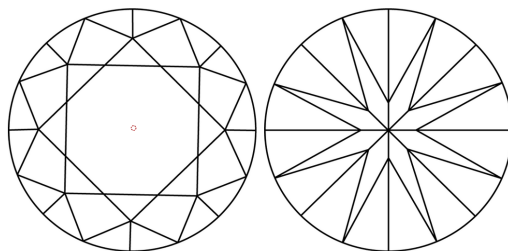
LABORATORY GROWN DIAMOND REPORT

LG603344734
Report verification at igi.org

PROPORTIONS



CLARITY CHARACTERISTICS



KEY TO SYMBOLS

Red symbols indicate internal characteristics.
Green symbols indicate external characteristics.

LABORATORY GROWN
DIAMOND REPORT

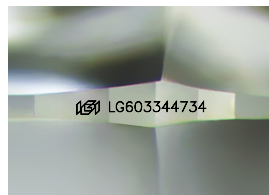
GRADING SCALES

CLARITY

IF	VVS ¹⁻²	VS ¹⁻²	SI ¹⁻²	I ¹⁻³
Internally Flawless	Very Very Slightly Included	Very Slightly Included	Slightly Included	Included

COLOR

D E F G H I J Faint Very Light Light



Sample Image Used



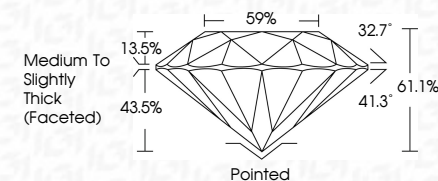
© IGI 2020, International Gemological Institute

FD - 10 20

LABORATORY GROWN DIAMOND REPORT

October 26, 2023	
IGI Report Number	LG603344734
Description	LABORATORY GROWN DIAMOND
Shape and Cutting Style	ROUND BRILLIANT
Measurements	6.62 - 6.64 X 4.05 MM

GRADING RESULTS	
Carat Weight	1.10 CARAT
Color Grade	F
Clarity Grade	VVS 1
Cut Grade	EXCELLENT



ADDITIONAL GRADING INFORMATION

Polish	EXCELLENT
Symmetry	EXCELLENT
Fluorescence	NONE
Inscription(s)	 LG603344734
Comments: As Grown - No indication of post-growth treatment.	
This Laboratory Grown Diamond was created by High Pressure High Temperature (HPHT) growth process.	
Type II	



IG

Date:	October 26, 2023
ID Report No.	GRI-2023-1089734
Sample Name:	GI REPORT NO. LGH034734
Weight:	1.10 CARAT
Color Grade:	F
Clarity Grade:	VVS1
Cut Grade:	EXCELLENT
Depth:	61.1%
Table:	59%
Girdle:	Medium To Slightly Thick (faceted)
Fluorescence:	Pinkish
Symmetry:	EXCELLENT
Inclusions:	NONE
Comments:	(#) LUGS034734 No indication of post-growth treatment. The Laboratory Grown Diamond was created by High Pressure High Temperature (HPHT) growth process. Type II