



ELECTRONIC COPY

LABORATORY GROWN DIAMOND REPORT

October 11, 2023	
IGI Report Number	LG603340605
Description	LABORATORY GROWN DIAMOND
Shape and Cutting Style	ROUND BRILLIANT
Measurements	14.10 - 14.18 X 8.32 MM

GRADING RESULTS

Carat Weight	10.07 CARATS
Color Grade	G
Clarity Grade	VS 1
Cut Grade	IDEAL

ADDITIONAL GRADING INFORMATION

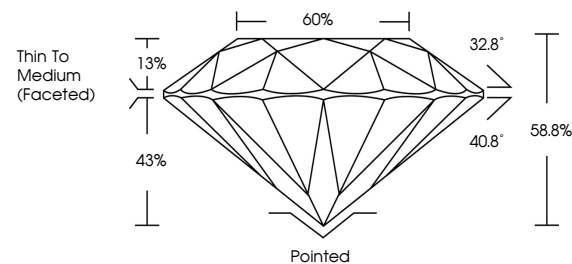
Polish	EXCELLENT
Symmetry	EXCELLENT
Fluorescence	NONE
Inscription(s)	LG603340605

Comments: This Laboratory Grown Diamond was created by Chemical Vapor Deposition (CVD) growth process and may include post-growth treatment.
Type IIa

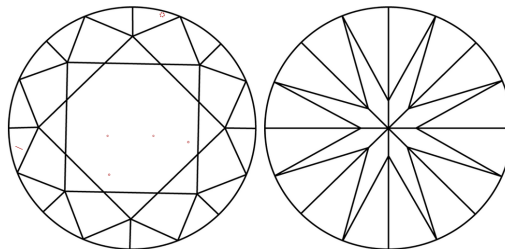
LABORATORY GROWN DIAMOND REPORT

LG603340605
Report verification at igi.org

PROPORTIONS



CLARITY CHARACTERISTICS



KEY TO SYMBOLS

Red symbols indicate internal characteristics.
Green symbols indicate external characteristics.

LABORATORY GROWN
DIAMOND REPORT

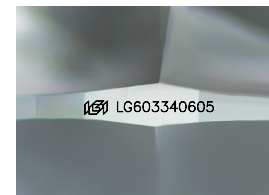
GRADING SCALES

CLARITY

IF	VVS ¹⁻²	VS ¹⁻²	SI ¹⁻²	I ¹⁻³
Internally Flawless	Very Very Slightly Included	Very Slightly Included	Slightly Included	Included

COLOR

D E F G H I J Faint Very Light Light



Sample Image Used

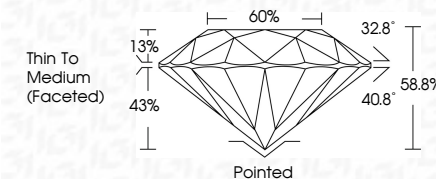


© IGI 2020, International Gemological Institute

FD - 10 20

LABORATORY GROWN DIAMOND REPORT

October 11, 2023	
IGI Report Number	LG603340605
Description	LABORATORY GROWN DIAMOND
Shape and Cutting Style	ROUND BRILLIANT
Measurements	14.10 - 14.18 X 8.32 MM
GRADING RESULTS	
Carat Weight	10.07 CARATS
Color Grade	G
Clarity Grade	VS 1
Cut Grade	IDEAL



ADDITIONAL GRADING INFORMATION

Polish	EXCELLENT
Symmetry	EXCELLENT
Fluorescence	NONE
Inscription(s)	153 LG603340605
<p>Comments: This Laboratory Grown Diamond was created by Chemical Vapor Deposition (CVD) growth process and may include post-growth treatment.</p> <p>Type IIa</p>	



October 11, 2023	Q1 Report No: LG4034005	1007 CARATS	VS 1	IDEAL	68.0%	60%	Thin To Medium (Faceted)	Polished	EXCELLENT	EXCELLENT	NONE	1691 LG4034005	<p>Comments: Gemstone: Natural, Clean, Diamond was treated by Chemical Vapor Deposition (CVD) growth process and may include post-growth treatment. Type IIa</p>
ROUND BRILLIANT													
14.10 - 14.18 X 8.32 MM													
Carat Weight	Color Grade	Clarity Grade	Depth	Table	Girdle	Culet	Polish	Symmetry	Fluorescence	Inscriptions(s)			