



**ELECTRONIC COPY**

## LABORATORY GROWN DIAMOND REPORT

October 5, 2023	
IGI Report Number	LG602393556
Description	LABORATORY GROWN DIAMOND
Shape and Cutting Style	ROUND BRILLIANT
Measurements	7.24 - 7.27 X 4.41 MM

## GRADING RESULTS

Carat Weight	1.43 CARAT
Color Grade	F
Clarity Grade	VS 2
Cut Grade	IDEAL

### ADDITIONAL GRADING INFORMATION

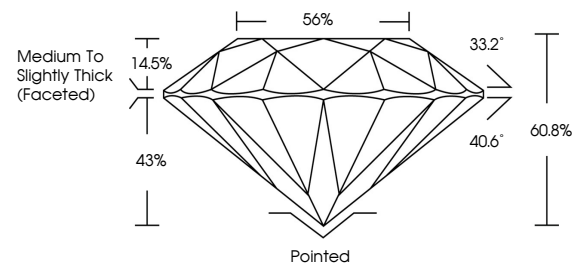
Polish	EXCELLENT
Symmetry	EXCELLENT
Fluorescence	NONE
Inscription(s)	15 LG602393556

Comments: This Laboratory Grown Diamond was created by Chemical Vapor Deposition (CVD) growth process and may include post-growth treatment.  
Type IIa

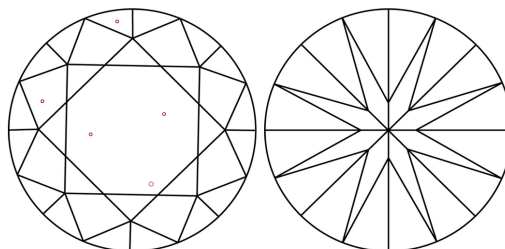
## LABORATORY GROWN DIAMOND REPORT

LG602393556  
Report verification at [igi.org](https://igi.org)

## PROPORTIONS



## CLARITY CHARACTERISTICS



## KEY TO SYMBOLS

Red symbols indicate internal characteristics.  
Green symbols indicate external characteristics.

LABORATORY GROWN  
DIAMOND REPORT

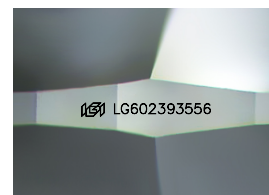
## GRADING SCALES

## CLARITY

IF	VVS <sup>1-2</sup>	VS <sup>1-2</sup>	SI <sup>1-2</sup>	I <sup>1-3</sup>
Internally Flawless	Very Very Slightly Included	Very Slightly Included	Slightly Included	Included

**COLOR**

D E F G H I J Faint Very Light Light



Sample Image Used



© IGI 2020, International Gemological Institute

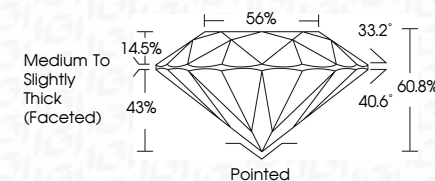
FD - 10 20

**www.igi.org**

## LABORATORY GROWN DIAMOND REPORT

October 5, 2023	
IGI Report Number	LG602393556
Description	LABORATORY GROWN DIAMOND
Shape and Cutting Style	ROUND BRILLIANT
Measurements	7.24 - 7.27 X 4.41 MM

GRADING RESULTS	
Carat Weight	1.43 CARAT
Color Grade	F
Clarity Grade	VS 2
Cut Grade	IDEAL



### ADDITIONAL GRADING INFORMATION

Polish	EXCELLENT
Symmetry	EXCELLENT
Fluorescence	NONE
Inscription(s)	 LG-602393556

Comments: This Laboratory Grown Diamond was created by Chemical Vapor Deposition (CVD) growth process and may include post-growth treatment.  
Type IIa



IG

<b>October 5, 2023</b>	<b>GI Growth No. 93856</b>	<b>1.43 CARAT</b>	<b>Vs 2</b>	<b>IDEAL</b>	<b>60%</b>	<b>Medium to Slightly Mid (faced)</b>	<b>Parted</b>	<b>EXCELLENT</b>	<b>NONE</b>	<b>(#) LGA0293856</b>	<b>Comments:</b> <b>Grown Diamond was created by Chemical Vapor Deposition (CVD) growth process and may include post-growth treatment.</b>
<b>ROUND BRILLIANT</b>	<b>24 - 7.27 X 4.11 MM</b>	<b>Color Weight</b>	<b>Clarity Grade</b>	<b>Cut Grade</b>	<b>Depth</b>	<b>Girdle</b>	<b>Quiet</b>	<b>Polish</b>	<b>Symmetry</b>	<b>Fluorescence</b>	<b>Type IIA</b>
		<b>Color Grade</b>	<b>Clarity Grade</b>	<b>Cut Grade</b>	<b>Table</b>					<b>Inscription(s)</b>	