



ELECTRONIC COPY

LABORATORY GROWN DIAMOND REPORT

October 4, 2023	
IGI Report Number	LG602393434
Description	LABORATORY GROWN DIAMOND
Shape and Cutting Style	ROUND BRILLIANT
Measurements	7.02 - 7.07 X 4.23 MM

GRADING RESULTS

Carat Weight	1.30 CARAT
Color Grade	E
Clarity Grade	VS 1
Cut Grade	IDEAL

ADDITIONAL GRADING INFORMATION

Polish	EXCELLENT
Symmetry	EXCELLENT
Fluorescence	NONE
Inscription(s)	 LG602393434

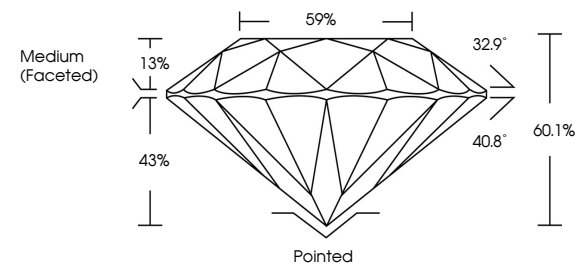
Comments: This Laboratory Grown Diamond was created by Chemical Vapor Deposition (CVD) growth process and may include post-growth treatment.
Type IIa

LABORATORY GROWN DIAMOND REPORT

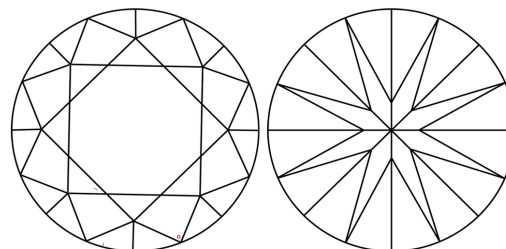
LG602393434

Report verification at igi.org

PROPORTIONS



CLARITY CHARACTERISTICS



KEY TO SYMBOLS

Red symbols indicate internal characteristics.
Green symbols indicate external characteristics.

LABORATORY GROWN
DIAMOND REPORT

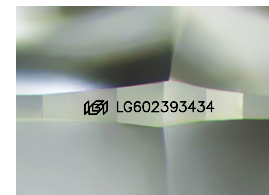
GRADING SCALES

CLARITY

IF	VVS ¹⁻²	VS ¹⁻²	SI ¹⁻²	I ¹⁻³
Internally Flawless	Very Very Slightly Included	Very Slightly Included	Slightly Included	Included

COLOR

D E F G H I J Faint Very Light Light



Sample Image Used



© IGI 2020, International Gemological Institute

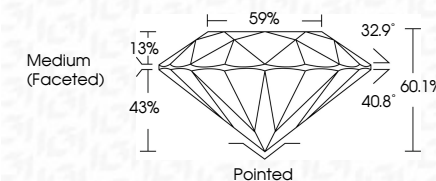
FD - 10 20

www.igi.org

LABORATORY GROWN DIAMOND REPORT

October 4, 2023	
IGI Report Number	LG602393434
Description	LABORATORY GROWN DIAMOND
Shape and Cutting Style	ROUND BRILLIANT
Measurements	7.02 - 7.07 X 4.23 MM

Carat Weight	1.30 CARAT
Color Grade	E
Clarity Grade	VS 1
Cut Grade	IDEAL



ADDITIONAL GRADING INFORMATION

Polish	EXCELLENT
Symmetry	EXCELLENT
Fluorescence	NONE
Inscription(s)	(15) LG-602393434

Comments: This Laboratory Grown Diamond was created by Chemical Vapor Deposition (CVD) growth process and may include post-growth treatment.
Type IIa



October 4, 2023	QI Report No. LG602393484	
ROUND BRILLIANT		
1.02 - 7.07 X 4.23 MM		
Carat Weight	VS 1	1.30 CARAT
Color Grade	IDEAL	E
Cut Grade	60.1%	IDEAL
Depth	59%	60.1%
Girdle	Medium (Faceted)	59%
Culet	Poished	None
Polish	Excellent	Excellent
Symmetry	Excellent	Excellent
Fluorescence	None	None
Inscriptions(s)	#61 LG602393484	

Comments:
 Created by Gemmy Diamond was
 treated by Chemical Vapor Deposition
 (CVD) growth process and may include
 post-growth treatment.
 Type IIA