



ELECTRONIC COPY

LABORATORY GROWN DIAMOND REPORT

October 5, 2023	
IGI Report Number	LG602393430
Description	LABORATORY GROWN DIAMOND
Shape and Cutting Style	SQUARE CUSHION BRILLIANT
Measurements	7.01 X 6.89 X 4.56 MM

GRADING RESULTS

Carat Weight	1.68 CARAT
Color Grade	F
Clarity Grade	VS 1

ADDITIONAL GRADING INFORMATION

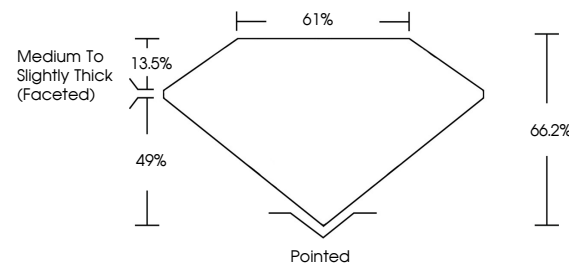
Polish	EXCELLENT
Symmetry	EXCELLENT
Fluorescence	NONE
Inscription(s)	 LG602393430

Comments: This Laboratory Grown Diamond was created by Chemical Vapor Deposition (CVD) growth process and may include post-growth treatment. Type IIa

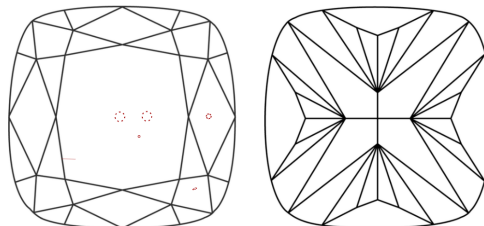
LABORATORY GROWN DIAMOND REPORT

LG602393430
Report verification at igi.org

PROPORTIONS



CLARITY CHARACTERISTICS



KEY TO SYMBOLS

Red symbols indicate internal characteristics.
Green symbols indicate external characteristics.

LABORATORY GROWN
DIAMOND REPORT

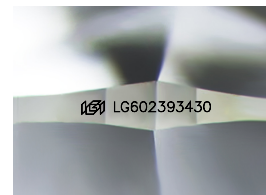
GRADING SCALES

CLARITY

IF	VVS ¹⁻²	VS ¹⁻²	SI ¹⁻²	I ¹⁻³
Internally Flawless	Very Very Slightly Included	Very Slightly Included	Slightly Included	Included

COLOR

D E F G H I J Faint Very Light Light



Sample Image Used



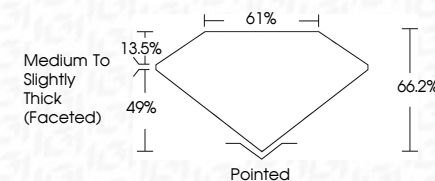
© IGI 2020, International Gemological Institute

FD - 10 20

www.igi.org

LABORATORY GROWN DIAMOND REPORT

October 5, 2023	
IGI Report Number	LG602393430
Description	LABORATORY GROWN DIAMOND
Shape and Cutting Style	SQUARE CUSHION BRILLIANT
Measurements	7.01 X 6.89 X 4.56 MM
GRADING RESULTS	
Carat Weight	1.68 CARAT
Color Grade	F
Clarity Grade	VS 1



ADDITIONAL GRADING INFORMATION

Polish	EXCELLENT
Symmetry	EXCELLENT
Fluorescence	NONE
Inscription(s)	 LG-602393430

Comments: This Laboratory Grown Diamond was created by Chemical Vapor Deposition (CVD) growth process and may include post-growth treatment.
Type IIa



October 5, 2023	GI Report No LG40293430	1.68 CARAT
SQUARE CUSHION BRILLIANT	7.01 X 6.89 X 4.56 MM	F
	Color Weight	VS 1
	Color Grade	66.2%
	Depth	0.1%
	Clarity Grade	Medium to slightly Thick (Faceted)
	Girdle	
	Symmetry	Polished
	Fluorescence	EXCELLENT
	Inscriptions(s)	EXCELLENT
		NONE
		pg# LG40293430

Comments: This is a Very, Very, Very Grown Diamond was created by Chemical Vapor Deposition (CVD) growth process and may include post-growth treatment.

Type IIA