



**ELECTRONIC COPY**

## LABORATORY GROWN DIAMOND REPORT

October 7, 2023	
IGI Report Number	LG602377133
Description	LABORATORY GROWN DIAMOND
Shape and Cutting Style	ROUND BRILLIANT
Measurements	7.64 - 7.67 X 4.78 MM

## GRADING RESULTS

Carat Weight	1.74 CARAT
Color Grade	F
Clarity Grade	VVS 1
Cut Grade	IDEAL

### ADDITIONAL GRADING INFORMATION

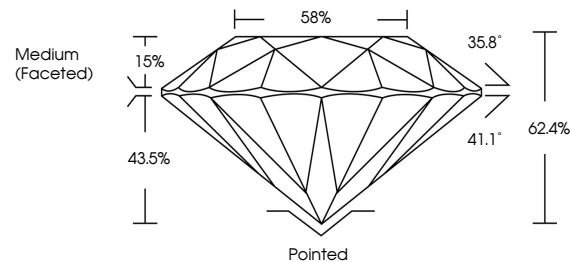
Polish	EXCELLENT
Symmetry	EXCELLENT
Fluorescence	NONE
Inscription(s)	15 LG602377133

Comments: As Grown - No indication of post-growth treatment.  
This Laboratory Grown Diamond was created by High Pressure High Temperature (HPHT) growth process.  
Type II

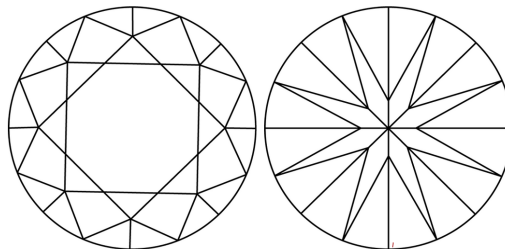
## LABORATORY GROWN DIAMOND REPORT

LG602377133  
Report verification at [igi.org](https://igi.org)

## PROPORTIONS



## CLARITY CHARACTERISTICS



## KEY TO SYMBOLS

Red symbols indicate internal characteristics.  
Green symbols indicate external characteristics.

LABORATORY GROWN  
DIAMOND REPORT

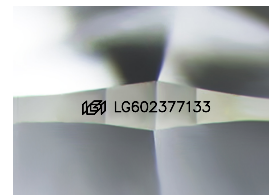
## GRADING SCALES

## CLARITY

IF	VVS <sup>1-2</sup>	VS <sup>1-2</sup>	SI <sup>1-2</sup>	I <sup>1-3</sup>
Internally Flawless	Very Very Slightly Included	Very Slightly Included	Slightly Included	Included

**COLOR**

D E F G H I J Faint Very Light Light



Sample Image Used



© IGI 2020, International Gemological Institute

FD - 10 20

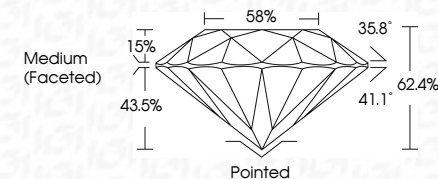
**www.igi.org**

## LABORATORY GROWN DIAMOND REPORT

October 7, 2023	
IGI Report Number	LG602377133
Description	LABORATORY GROWN DIAMOND
Shape and Cutting Style	ROUND BRILLIANT
Measurements	7.64 - 7.67 X 4.78 MM

## GRADING RESULTS

Carat Weight	1.74 CARAT
Color Grade	F
Clarity Grade	VVS 1
Cut Grade	IDEAL



### ADDITIONAL GRADING INFORMATION

Polish	EXCELLENT
Symmetry	EXCELLENT
Fluorescence	NONE
Inscription(s)	<del>LG</del> LG602377133
Comments: As Grown - No indication of post-growth treatment.	
This Laboratory Grown Diamond was created by High Pressure High Temperature (HPHT) growth process.	
Type II	



IG

October 7, 2023  
IGI Report No LG602377133  
ROUND BRILLIANT

7.64 - 7.57 X 4.78 MM	1.74 CARAT
Carat Weight	
Color Grade	F
Clarity Grade	VS 1
Cut Grade	IDEAL
Depth	62.4%
Table	58%
Girdle	Medium (Excellent)

	Pointed	EXCELLENT	EXCELLENT	NONE
Culet				
Polish				
Symmetry				
Fluorescence				

**Comments:**  
As Grown - No indication of post-growth treatment.  
This Laboratory Grown Diamond was created by High Pressure High Temperature (HPHT) growth process.