

ELECTRONIC COPY

LABORATORY GROWN DIAMOND REPORT

October 2, 2023	
IGI Report Number	LG602367156
Description	LABORATORY GROWN DIAMOND
Shape and Cutting Style	ROUND BRILLIANT
Measurements	6.55 - 6.58 X 4.00 MM

GRADING RESULTS

Carat Weight	1.07 CARAT
Color Grade	E
Clarity Grade	INTERNALLY FLAWLESS
Cut Grade	IDEAL

ADDITIONAL GRADING INFORMATION

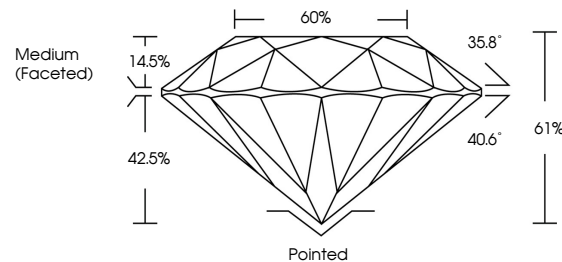
Polish	EXCELLENT
Symmetry	EXCELLENT
Fluorescence	NONE
Inscription(s)	13 LG602367156

Comments: As Grown - No indication of post-growth treatment.
This Laboratory Grown Diamond was created by High Pressure High Temperature (HPHT) growth process.
Type II

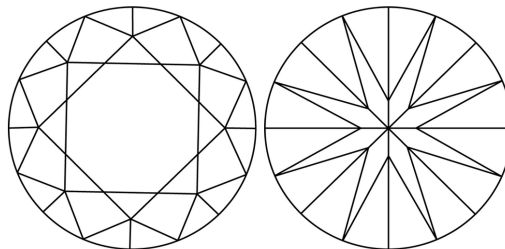
LABORATORY GROWN DIAMOND REPORT

LG602367156
Report verification at igi.org

PROPORTIONS



CLARITY CHARACTERISTICS



KEY TO SYMBOLS

Red symbols indicate internal characteristics.
Green symbols indicate external characteristics.

LABORATORY GROWN
DIAMOND REPORT

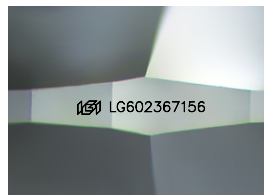
GRADING SCALES

CLARITY

IF	VVS ¹⁻²	VS ¹⁻²	SI ¹⁻²	I ¹⁻³
Internally Flawless	Very Very Slightly Included	Very Slightly Included	Slightly Included	Included

COLOR

D E F G H I J Faint Very Light Light



Sample Image Used

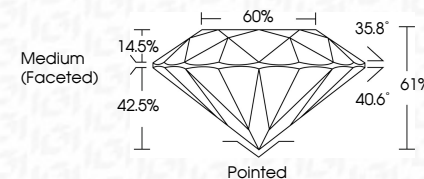


© IGI 2020, International Gemological Institute

FD - 10 20

LABORATORY GROWN DIAMOND REPORT

October 2, 2023	
IGI Report Number	LG602367156
Description	LABORATORY GROWN DIAMOND
Shape and Cutting Style	ROUND BRILLIANT
Measurements	6.55 - 6.58 X 4.00 MM
GRADING RESULTS	
Carat Weight	1.01 CARAT
Color Grade	E
Clarity Grade	INTERNALLY FLAWLESS
Cut Grade	IDEAL



ADDITIONAL GRADING INFORMATION

Polish	EXCELLENT
Symmetry	EXCELLENT
Fluorescence	NONE
Inscription(s)	LG LG602367156
Comments: As Grown - No indication of post-growth treatment.	
This Laboratory Grown Diamond was created by High Pressure High Temperature (HPHT) growth process.	
Type II	



	October 2, 2023
	GJ Report No LG60287156
	RND ROUND BRILLIANT
	5.55 - 4.98 X 4.00 MM
	Color Weight 1.07 CARAT
	Carat Grade E
	Color Grade I F
	Cut Grade IDEAL
	Depth 61%
	Table 60%
	Girdle Medium (Faceted)
	Fluorescence None
	Symmetry EXCELLENT
	Polarization Excellent
	Inclusions (#) LG60287156
	Comments:
	No indication of post-growth treatment.
	The Laboratory Grown Diamond was created by High Pressure High Temperature (HPHT) growth process.
	Type II