

ELECTRONIC COPY

LABORATORY GROWN DIAMOND REPORT

| | |
|-------------------------|-----------------------------|
| September 29, 2023 | |
| IGI Report Number | LG602354991 |
| Description | LABORATORY GROWN DIAMOND |
| Shape and Cutting Style | ROUND BRILLIANT |
| Measurements | 6.77 - 6.79 X 4.17 MM |

GRADING RESULTS

| | |
|---------------|------------|
| Carat Weight | 1.18 CARAT |
| Color Grade | E |
| Clarity Grade | VVS 2 |
| Cut Grade | IDEAL |

ADDITIONAL GRADING INFORMATION

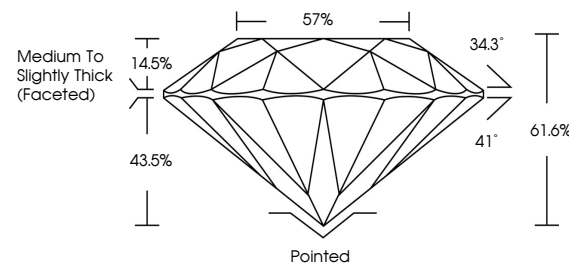
| | |
|----------------|----------------|
| Polish | EXCELLENT |
| Symmetry | EXCELLENT |
| Fluorescence | NONE |
| Inscription(s) | 15 LG602354991 |

Comments: This Laboratory Grown Diamond was created by Chemical Vapor Deposition (CVD) growth process and may include post-growth treatment.
Type IIa

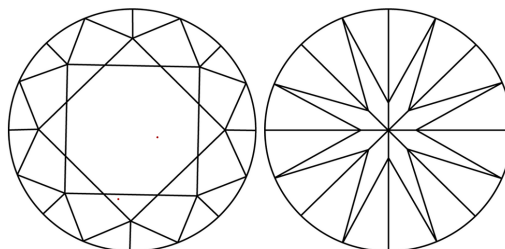
LABORATORY GROWN DIAMOND REPORT

LG602354991
Report verification at [igi.org](https://www.igi.org)

PROPORTIONS



CLARITY CHARACTERISTICS



KEY TO SYMBOLS

Red symbols indicate internal characteristics.
Green symbols indicate external characteristics.

LABORATORY GROWN
DIAMOND REPORT

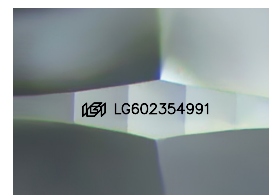
GRADING SCALES

CLARITY

| IF | VVS ¹⁻² | VS ¹⁻² | SI ¹⁻² | I ¹⁻³ |
|------------------------|--------------------------------|---------------------------|----------------------|------------------|
| Internally Flawless | Very Very Slightly Included | Very Slightly Included | Slightly Included | Included |

COLOR

D E F G H I J Faint Very Light Light



Sample Image Used



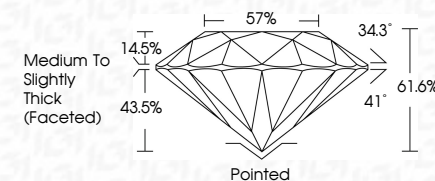
© IGI 2020, International Gemological Institute

FD - 10 20

LABORATORY GROWN DIAMOND REPORT

| | |
|-------------------------|-----------------------------|
| September 29, 2023 | |
| IGI Report Number | LG602354991 |
| Description | LABORATORY GROWN DIAMOND |
| Shape and Cutting Style | ROUND BRILLIANT |
| Measurements | 6.77 - 6.79 X 4.17 MM |

| GRADING RESULTS | |
|-----------------|------------|
| Carat Weight | 1.18 CARAT |
| Color Grade | E |
| Clarity Grade | VVS 2 |
| Cut Grade | IDEAL |



ADDITIONAL GRADING INFORMATION

| | |
|---------------------------------------------------------------------------------------------------------------------------------------------------------------------|--------------------------|
| Polish | EXCELLENT |
| Symmetry | EXCELLENT |
| Fluorescence | NONE |
| Inscription(s) | LG LG60235499 |
| <p>Comments: This Laboratory Grown Diamond was created by Chemical Vapor Deposition (CVD) growth process and may include post-growth treatment.</p> <p>Type IIa</p> | |



| |
|---------------------------------------------------------------------------------------------------------------------------------|
| Sepember 29, 2023 |
| (G) Report No LG602854991 |
| ROUND BRILLIANT |
| 6.77 - 6.79 X 4.17 MM |
| Carat Weight 1.18 CARAT |
| Color Grade E |
| Clarity Grade VVS 2 |
| Cut Grade IDEAL |
| Depth 61.6% |
| Table 57% |
| Girdle Medium to Slightly Thick (Faceted) |
| Culet Pointed |
| Pavil. EXCELLENT |
| Symmetry EXCELLENT |
| Fluorescence NONE |
| Inscriptions(s) #61LG602854991 |
| Comments: This Gemstone was created by Chemical Vapor Deposition (CVD) growth process and may include post-growth treatment. |
| Type IICa |