



ELECTRONIC COPY

LABORATORY GROWN DIAMOND REPORT

June 25, 2024
IGI Report Number LG600348695
Description LABORATORY GROWN DIAMOND
Shape and Cutting Style CUT CORNERED RECTANGULAR MODIFIED BRILLIANT
Measurements 7.39 X 5.02 X 3.41 MM

GRADING RESULTS

Carat Weight 1.09 CARAT
Color Grade FANCY VIVID BLUE
Clarity Grade VS 1

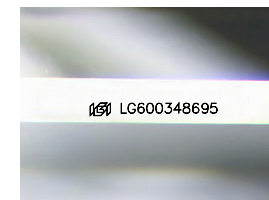
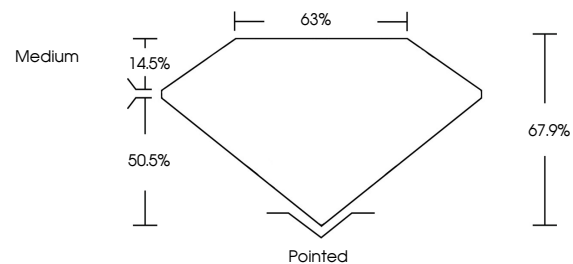
ADDITIONAL GRADING INFORMATION

Polish EXCELLENT
Symmetry EXCELLENT
Fluorescence NONE

Inscription(s) IGI LG600348695

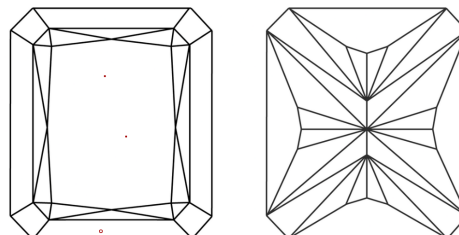
Comments: This Laboratory Grown Diamond was created by Chemical Vapor Deposition (CVD) growth process.
Indications of post-growth treatment.

PROPORTIONS



Sample Image Used

CLARITY CHARACTERISTICS



KEY TO SYMBOLS

Red symbols indicate internal characteristics.
Green symbols indicate external characteristics.

COLOR

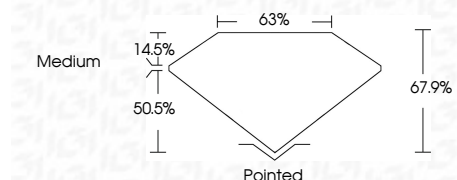
D E F G H I J Faint Very Light Light

CLARITY

| | | | | |
|---------------------|-----------------------------|------------------------|-------------------|------------------|
| IF | VS ¹⁻² | VS ¹⁻² | SI ¹⁻² | I ¹⁻³ |
| Internally Flawless | Very Very Slightly Included | Very Slightly Included | Slightly Included | Included |



June 25, 2024
IGI Report Number LG600348695
Description LABORATORY GROWN DIAMOND
Shape and Cutting Style CUT CORNERED RECTANGULAR MODIFIED BRILLIANT
Measurements 7.39 X 5.02 X 3.41 MM
GRADING RESULTS
Carat Weight 1.09 CARAT
Color Grade FANCY VIVID BLUE
Clarity Grade VS 1



ADDITIONAL GRADING INFORMATION

Polish EXCELLENT
Symmetry EXCELLENT
Fluorescence NONE
Inscription(s) IGI LG600348695

Comments: This Laboratory Grown Diamond was created by Chemical Vapor Deposition (CVD) growth process.
Indications of post-growth treatment.



June 25, 2024
IGI Report No LG600348695
CUT CORNERED RECT. MODIFIED BRILLIANT
7.39 X 5.02 X 3.41 MM
1.09 CARAT
FANCY VIVID BLUE
VS 1
67.9%
63%
Medium
Pointed
EXCELLENT
EXCELLENT
NONE
IGI LG600348695

Comments: This Laboratory Grown Diamond was created by Chemical Vapor Deposition (CVD) growth process.
Indications of post-growth treatment.