



## LABORATORY GROWN DIAMOND REPORT

## GRADING RESULTS

### ADDITIONAL GRADING INFORMATION

Comments: This Laboratory Grown Diamond was created by Chemical Vapor Deposition (CVD) growth process and may include post-growth treatment.  
Type IIa

LG600345775  
Report verification at [igi.org](https://igi.org)

Diagram illustrating the cross-section of a diamond-shaped object, showing dimensions and features:

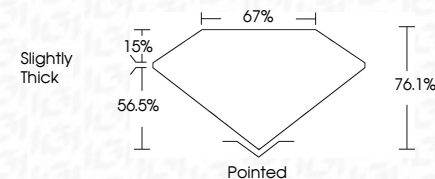
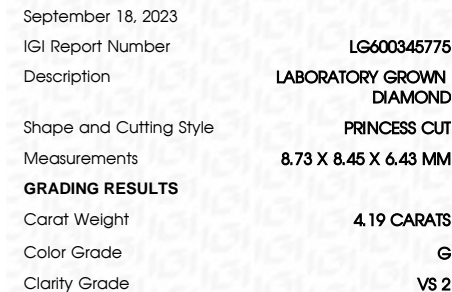
- Top width: 67%
- Top thickness: 15%
- Bottom thickness: 56.5%
- Total height: 76.1%
- Labels: "Slightly Thick" (top left), "Pointed" (bottom center)

Red symbols indicate internal characteristics.  
Green symbols indicate external characteristics.

## GRADING SCALES

IF	VVS <sup>1-2</sup>	VS <sup>1-2</sup>	SI <sup>1-2</sup>	I <sup>1-3</sup>
Internally Flawless	Very Very Slightly Included	Very Slightly Included	Slightly Included	Included

D E F G H I J Faint Very Light Light



Polish	EXCELLENT
Symmetry	EXCELLENT
Fluorescence	NONE
Inscription(s)	18 LG 600345775

Comments: This Laboratory Grown Diamond was created by Chemical Vapor Deposition (CVD) growth process and may include post-growth treatment.  
Type IIa



© IGI 2020, International Gemmological Institute

FD - 10 20

**www.igi.org**

September 18, 2023  
 IGI Report No LG600345775  
 PRINCESS CUT

7.75 X 8.45 X 6.63 MM	Carat Weight	4.19 CARATS
	Color Grade	G
	Clarity Grade	VS 2
	Depth	76.1%
	Table	67%
	Girdle	Slightly Thick
	Culet	Pointed
	Polish	EXCELLENT
	Symmetry	EXCELLENT
	Fluorescence	NONE
	Inscriptions(s)	4811 G405056775

**Comments:**  
This Laboratory Grown Diamond was created by Chemical Vapor Deposition (CVD) growth process and may include post-growth treatment.

THIS DOCUMENT WAS PRODUCED WITH THE FOLLOWING SECURITY MEASURES: SPECIAL DOCUMENT PAPER, INK SCREENS, WATERMARK, BACKGROUND DESIGNS, HOLOGRAM AND OTHER SECURITY FEATURES NOT LISTED AND DO EXCEED DOCUMENT SECURITY INDUSTRY GUIDELINES