



ELECTRONIC COPY

LABORATORY GROWN DIAMOND REPORT

October 12, 2023
 IGI Report Number **LG600343468**
 Description **LABORATORY GROWN
DIAMOND**
 Shape and Cutting Style **ROUND BRILLIANT**
 Measurements **9.79 - 9.86 X 6.08 MM**

GRADING RESULTS

Carat Weight **3.65 CARATS**
 Color Grade **FANCY INTENSE BROWNISH
PINK**
 Clarity Grade **VVS 2**
 Cut Grade **IDEAL**

ADDITIONAL GRADING INFORMATION

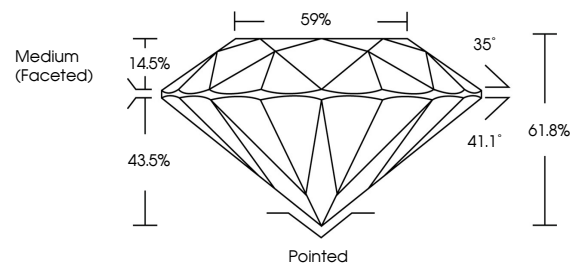
Polish **EXCELLENT**
 Symmetry **EXCELLENT**
 Fluorescence **SLIGHT**
 Inscription(s) **IGI LG600343468**

Comments: This Laboratory Grown Diamond was created by Chemical Vapor Deposition (CVD) growth process.
 Indications of post-growth treatment.

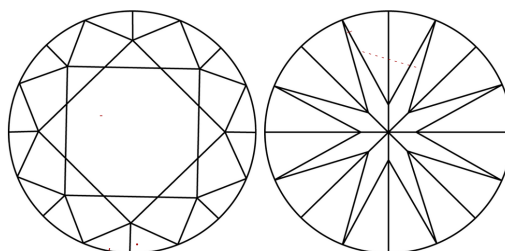
LABORATORY GROWN DIAMOND REPORT

LG600343468
 Report verification at igi.org

PROPORTIONS



CLARITY CHARACTERISTICS



KEY TO SYMBOLS

Red symbols indicate internal characteristics.
 Green symbols indicate external characteristics.

**LABORATORY GROWN
DIAMOND REPORT**

GRADING SCALES

CLARITY

IF	VVS ¹⁻²	VS ¹⁻²	SI ¹⁻²	I ¹⁻³
Internally Flawless	Very Very Slightly Included	Very Slightly Included	Slightly Included	Included

COLOR

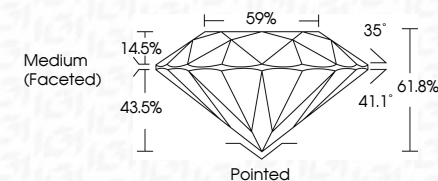
D	E	F	G	H	I	J	Faint	Very Light	Light
Light Tint	Fancy Light	Fancy	Fancy Intense	Fancy Vivid					

LABORATORY GROWN DIAMOND REPORT

October 12, 2023
 IGI Report Number **LG600343468**
 Description **LABORATORY GROWN
DIAMOND**
 Shape and Cutting Style **ROUND BRILLIANT**
 Measurements **9.79 - 9.86 X 6.08 MM**

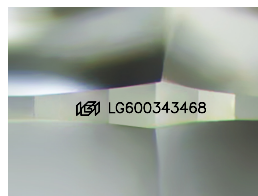
GRADING RESULTS

Carat Weight **3.65 CARATS**
 Color Grade **FANCY INTENSE BROWNISH
PINK**
 Clarity Grade **VVS 2**
 Cut Grade **IDEAL**



ADDITIONAL GRADING INFORMATION

Polish **EXCELLENT**
 Symmetry **EXCELLENT**
 Fluorescence **SLIGHT**
 Inscription(s) **IGI LG600343468**
 Comments: This Laboratory Grown Diamond was created by Chemical Vapor Deposition (CVD) growth process.
 Indications of post-growth treatment.



Sample Image Used



IGI

October 12, 2023
 IGI Report No **LG600343468**
ROUND BRILLIANT
 Carat Weight **3.65 CARATS**
 Color Grade **FANCY INTENSE BROWNISH PINK**
 Clarity Grade **VVS 2**
 Cut Grade **IDEAL**
 Depth **61.8%**
 Table **59%**
 Girdle **Medium (Faceted)**
 Culet **Pointed**
 Polish **EXCELLENT**
 Symmetry **EXCELLENT**
 Fluorescence **SLIGHT**
 Inscription(s) **IGI LG600343468**
 Comments: This Laboratory Grown Diamond was created by Chemical Vapor Deposition (CVD) growth process.
 Indications of post-growth treatment.