



ELECTRONIC COPY

LABORATORY GROWN DIAMOND REPORT

September 19, 2023
IGI Report Number LG598391016
Description LABORATORY GROWN DIAMOND
Shape and Cutting Style ROUND BRILLIANT
Measurements 10.03 - 10.06 X 6.12 MM

GRADING RESULTS

Carat Weight 3.79 CARATS
Color Grade G
Clarity Grade VS 1
Cut Grade IDEAL

ADDITIONAL GRADING INFORMATION

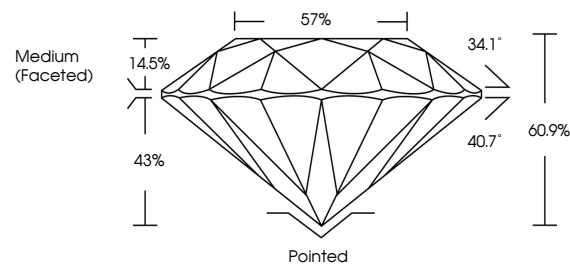
Polish EXCELLENT
Symmetry EXCELLENT
Fluorescence NONE
Inscription(s) IGI LG598391016

Comments: HEARTS & ARROWS
This Laboratory Grown Diamond was created by Chemical Vapor Deposition (CVD) growth process and may include post-growth treatment. Type IIa

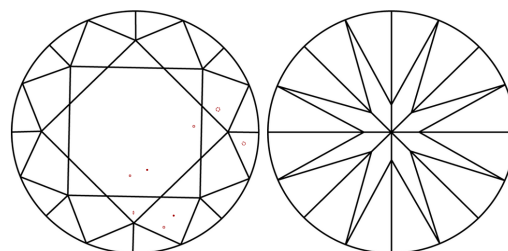
LABORATORY GROWN DIAMOND REPORT

LG598391016
Report verification at igi.org

PROPORTIONS

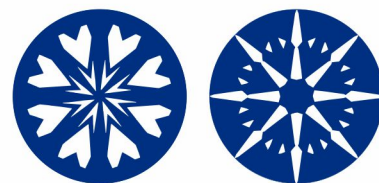


CLARITY CHARACTERISTICS



KEY TO SYMBOLS

Red symbols indicate internal characteristics.
Green symbols indicate external characteristics.



LABORATORY GROWN DIAMOND REPORT

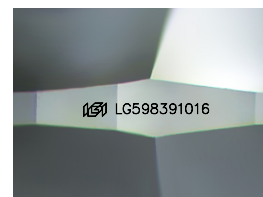
GRADING SCALES

CLARITY

Table mapping clarity grades (IF, VVS, VS, SI, I) to descriptions (Internally Flawless, Very Very Slightly Included, etc.)

COLOR

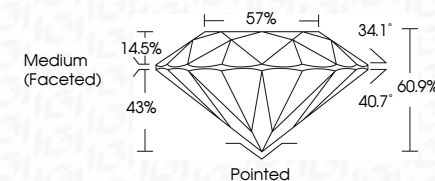
Table mapping color grades (D, E, F, G, H, I, J) to descriptions (Faint, Very Light, Light)



Sample Image Used

LABORATORY GROWN DIAMOND REPORT

September 19, 2023
IGI Report Number LG598391016
Description LABORATORY GROWN DIAMOND
Shape and Cutting Style ROUND BRILLIANT
Measurements 10.03 - 10.06 X 6.12 MM
GRADING RESULTS
Carat Weight 3.79 CARATS
Color Grade G
Clarity Grade VS 1
Cut Grade IDEAL



ADDITIONAL GRADING INFORMATION

Polish EXCELLENT
Symmetry EXCELLENT
Fluorescence NONE
Inscription(s) IGI LG598391016
Comments: HEARTS & ARROWS
This Laboratory Grown Diamond was created by Chemical Vapor Deposition (CVD) growth process and may include post-growth treatment. Type IIa



Summary table of diamond specifications: September 19, 2023, IGI Report No LG598391016, ROUND BRILLIANT, 10.03 - 10.06 X 6.12 MM, 3.79 CARATS, G, VS 1, IDEAL, 60.9%, 57%, Medium (Faceted), Polished, EXCELLENT, EXCELLENT, NONE, IGI LG598391016

