



# INTERNATIONAL GEMOLOGICAL INSTITUTE

ELECTRONIC COPY

## LABORATORY GROWN DIAMOND REPORT

LG598327320

### LABORATORY GROWN DIAMOND REPORT

#### IGI LABORATORY GROWN DIAMOND IDENTIFICATION REPORT

September 13, 2023

IGI Report Number

LG598327320

Description

LABORATORY GROWN DIAMOND

Shape and Cutting Style

ROUND BRILLIANT

Measurements

4.95 - 4.97 X 2.97 MM

#### GRADING RESULTS

Carat Weight

0.45 CARAT

Color Grade

FANCY PINK

Clarity Grade

VS 1

Cut Grade

FAIR

#### ADDITIONAL GRADING INFORMATION

Polish

VERY GOOD

Symmetry

VERY GOOD

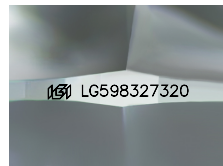
Fluorescence

SLIGHT

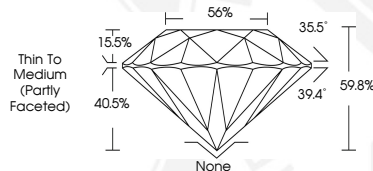
Inscription(s)

IGI LG598327320

Comments: This Laboratory Grown Diamond was created by High Pressure High Temperature (HPHT) growth process. Indications of post-growth treatment.



Sample Image Used



#### IGI LABORATORY GROWN DIAMOND ID REPORT

September 13, 2023

IGI Report Number LG598327320

#### ROUND BRILLIANT

4.95 - 4.97 X 2.97 MM

Carat Weight

0.45 CARAT

Color Grade

FANCY PINK

Clarity Grade

VS 1

Cut Grade

FAIR

Polish

VERY GOOD

Symmetry

VERY GOOD

Fluorescence

SLIGHT

Inscription(s)

IGI LG598327320

Comments: This Laboratory Grown Diamond was created by High Pressure High Temperature (HPHT) growth process. Indications of post-growth treatment.

#### IGI LABORATORY GROWN DIAMOND ID REPORT

September 13, 2023

IGI Report Number LG598327320

#### ROUND BRILLIANT

4.95 - 4.97 X 2.97 MM

Carat Weight

0.45 CARAT

Color Grade

FANCY PINK

Clarity Grade

VS 1

Cut Grade

FAIR

Polish

VERY GOOD

Symmetry

VERY GOOD

Fluorescence

SLIGHT

Inscription(s)

IGI LG598327320

Comments: This Laboratory Grown Diamond was created by High Pressure High Temperature (HPHT) growth process. Indications of post-growth treatment.



THIS DOCUMENT WAS PRODUCED WITH THE FOLLOWING SECURITY MEASURES: SPECIAL DOCUMENT PAPER, INK SCREENS, WATERMARK, BACKGROUND DESIGN, HOLOGRAM AND OTHER SECURITY FEATURES NOT LISTED AND DO EXCEED DOCUMENT SECURITY INDUSTRY GUIDELINES.

For terms & conditions and to verify this report, please visit [www.igi.org](http://www.igi.org)