

**ELECTRONIC COPY**

## LABORATORY GROWN DIAMOND REPORT

August 16, 2023	
IGI Report Number	LG595375139
Description	LABORATORY GROWN DIAMOND
Shape and Cutting Style	ROUND BRILLIANT
Measurements	7.38 - 7.43 X 4.52 MM

## GRADING RESULTS

Carat Weight	1.53 CARAT
Color Grade	I
Clarity Grade	VS 2
Cut Grade	IDEAL

### ADDITIONAL GRADING INFORMATION

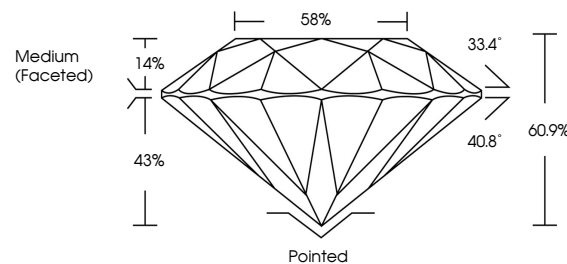
Polish	EXCELLENT
Symmetry	EXCELLENT
Fluorescence	NONE
Inscription(s)	15 LG595375139

Comments: This Laboratory Grown Diamond was created by Chemical Vapor Deposition (CVD) growth process and may include post-growth treatment.  
Type IIa

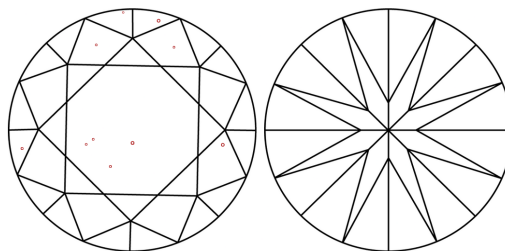
## LABORATORY GROWN DIAMOND REPORT

LG595375139  
Report verification at [igi.org](https://igi.org)

## PROPORTIONS



## CLARITY CHARACTERISTICS



## KEY TO SYMBOLS

Red symbols indicate internal characteristics.  
Green symbols indicate external characteristics.

LABORATORY GROWN  
DIAMOND REPORT

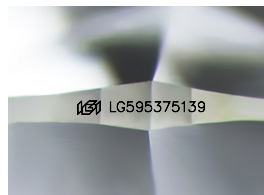
## GRADING SCALES

## CLARITY

IF	VVS <sup>1-2</sup>	VS <sup>1-2</sup>	SI <sup>1-2</sup>	I <sup>1-3</sup>
Internally Flawless	Very Very Slightly Included	Very Slightly Included	Slightly Included	Included

**COLOR**

D E F G H I J Faint Very Light Light



Sample Image Used

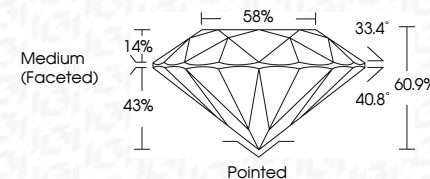


© IGI 2020, International Gemological Institute


FD - 10 20



August 16, 2023	
IGI Report Number	LG595375139
Description	LABORATORY GROWN DIAMOND
Shape and Cutting Style	ROUND BRILLIANT
Measurements	7.38 - 7.43 X 4.52 MM
GRADING RESULTS	
Carat Weight	1.53 CARAT
Color Grade	I
Clarity Grade	VS 2
Cut Grade	IDEAL



### ADDITIONAL GRADING INFORMATION

Polish	EXCELLENT
Symmetry	EXCELLENT
Fluorescence	NONE
Inscription(s)	 LG595375139
Comments: This Laboratory Grown Diamond was created by Chemical Vapor Deposition (CVD) growth process and may include post-growth treatment.	
Type Ila	

August 16, 2023
G Report No LG598375139
ROUND BRILLIANT
1.53 CARAT
VS2
IDEAL
60.1%
59%
Medium Faceted
Pinked
EXCELLENT
EXCELLENT
NONE
(6) LG598375139

Comments:  
This Natural Growth Diamond was  
treated by Chemical Vapor Deposition  
(CVD) growth process and may include  
post-growth treatment.  
Type IIa