



**ELECTRONIC COPY**

**LABORATORY GROWN DIAMOND REPORT**

August 4, 2023  
 IGI Report Number **LG593381407**  
 Description **LABORATORY GROWN  
DIAMOND**  
 Shape and Cutting Style **CUT CORNERED RECTANGULAR  
MODIFIED BRILLIANT**  
 Measurements **8.16 X 5.57 X 3.79 MM**

**GRADING RESULTS**

Carat Weight **1.55 CARAT**  
 Color Grade **F**  
 Clarity Grade **VS 1**

**ADDITIONAL GRADING INFORMATION**

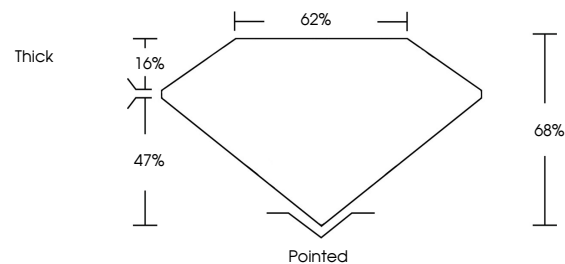
Polish **EXCELLENT**  
 Symmetry **EXCELLENT**  
 Fluorescence **NONE**  
 Inscription(s) **IGI LG593381407**

Comments: This Laboratory Grown Diamond was created by Chemical Vapor Deposition (CVD) growth process and may include post-growth treatment. Type IIa

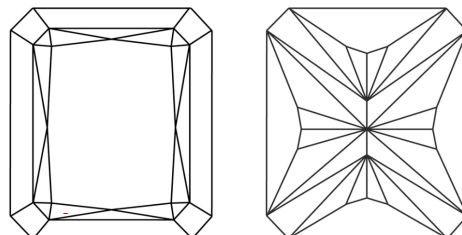
**LABORATORY GROWN DIAMOND REPORT**

**LG593381407**  
 Report verification at [igi.org](http://igi.org)

**PROPORTIONS**



**CLARITY CHARACTERISTICS**



**KEY TO SYMBOLS**

Red symbols indicate internal characteristics.  
 Green symbols indicate external characteristics.

**LABORATORY GROWN  
DIAMOND REPORT**

**GRADING SCALES**

**CLARITY**

| IF                     | VVS <sup>1-2</sup>             | VS <sup>1-2</sup>         | SI <sup>1-2</sup>    | I <sup>1-3</sup> |
|------------------------|--------------------------------|---------------------------|----------------------|------------------|
| Internally<br>Flawless | Very Very<br>Slightly Included | Very<br>Slightly Included | Slightly<br>Included | Included         |

**COLOR**

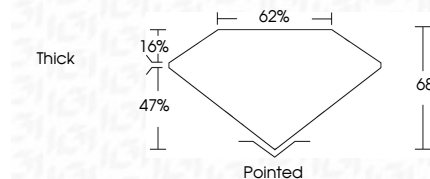
| D | E | F | G | H | I | J | Faint | Very Light | Light |
|---|---|---|---|---|---|---|-------|------------|-------|
|---|---|---|---|---|---|---|-------|------------|-------|

**LABORATORY GROWN DIAMOND REPORT**

August 4, 2023  
 IGI Report Number **LG593381407**  
 Description **LABORATORY GROWN  
DIAMOND**  
 Shape and Cutting Style **CUT CORNERED  
RECTANGULAR MODIFIED  
BRILLIANT**  
 Measurements **8.16 X 5.57 X 3.79 MM**

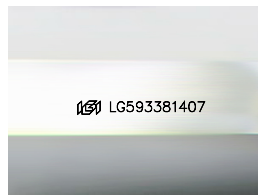
**GRADING RESULTS**

Carat Weight **1.55 CARAT**  
 Color Grade **F**  
 Clarity Grade **VS 1**



**ADDITIONAL GRADING INFORMATION**

Polish **EXCELLENT**  
 Symmetry **EXCELLENT**  
 Fluorescence **NONE**  
 Inscription(s) **IGI LG593381407**  
 Comments: This Laboratory Grown Diamond was created by Chemical Vapor Deposition (CVD) growth process and may include post-growth treatment. Type IIa



Sample Image Used



**IGI**

August 4, 2023  
 IGI Report No **LG593381407**  
**CUT CORNERED RECT. MODIFIED BRILLIANT**  
**8.16 X 5.57 X 3.79 MM**  
 Carat Weight **1.55 CARAT**  
 Color Grade **F**  
 Clarity Grade **VS 1**  
 Depth **68%**  
 Table **62%**  
 Girdle **Thick**  
 Culet **Pointed**  
 Polish **EXCELLENT**  
 Symmetry **EXCELLENT**  
 Fluorescence **NONE**  
 Inscription(s) **IGI LG593381407**

Comments: This Laboratory Grown Diamond was created by Chemical Vapor Deposition (CVD) growth process and may include post-growth treatment. Type IIa