



**INTERNATIONAL  
GEMOLOGICAL  
INSTITUTE**

**ELECTRONIC COPY**

**LABORATORY GROWN  
DIAMOND REPORT**

**LG593366251**

**IGI LABORATORY GROWN  
DIAMOND ID REPORT**

August 18, 2023  
IGI Report Number **LG593366251**  
**ROUND BRILLIANT**  
**5.15 - 5.17 X 3.07 MM**  
Carat Weight 0.50 CARAT  
Color Grade FANCY INTENSE  
BLUE  
Clarity Grade SI 2  
Cut Grade EXCELLENT  
Polish VERY GOOD  
Symmetry VERY GOOD  
Fluorescence NONE  
Inscription(s) LG593366251

Comments: This Laboratory Grown Diamond was created by Chemical Vapor Deposition (CVD) growth process. Indications of post-growth treatment. Secondary color: Green

**LABORATORY GROWN DIAMOND REPORT**

**IGI LABORATORY GROWN DIAMOND IDENTIFICATION REPORT**

August 18, 2023  
IGI Report Number LG593366251  
Description LABORATORY GROWN DIAMOND  
Shape and Cutting Style ROUND BRILLIANT  
Measurements 5.15 - 5.17 X 3.07 MM

**GRADING RESULTS**

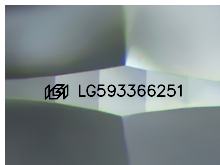
Carat Weight 0.50 CARAT  
Color Grade FANCY INTENSE BLUE  
Clarity Grade SI 2  
Cut Grade EXCELLENT

**ADDITIONAL GRADING INFORMATION**

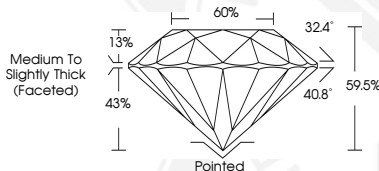
Polish VERY GOOD  
Symmetry VERY GOOD  
Fluorescence NONE  
Inscription(s) LG593366251

Comments: This Laboratory Grown Diamond was created by Chemical Vapor Deposition (CVD) growth process. Indications of post-growth treatment.

Secondary color: Green



Sample Image Used



**IGI LABORATORY GROWN  
DIAMOND ID REPORT**

August 18, 2023  
IGI Report Number **LG593366251**  
**ROUND BRILLIANT**  
**5.15 - 5.17 X 3.07 MM**  
Carat Weight 0.50 CARAT  
Color Grade FANCY INTENSE  
BLUE  
Clarity Grade SI 2  
Cut Grade EXCELLENT  
Polish VERY GOOD  
Symmetry VERY GOOD  
Fluorescence NONE  
Inscription(s) LG593366251

Comments: This Laboratory Grown Diamond was created by Chemical Vapor Deposition (CVD) growth process. Indications of post-growth treatment. Secondary color: Green

THIS DOCUMENT WAS PRODUCED WITH THE FOLLOWING SECURITY MEASURES: SPECIAL DOCUMENT PAPER, INK SCREENS, WATERMARK, BACKGROUND DESIGN, HOLOGRAM AND OTHER SECURITY FEATURES NOT LISTED AND DO EXCEED DOCUMENT SECURITY INDUSTRY GUIDELINES.

For terms & conditions and to verify this report, please visit [www.igi.org](http://www.igi.org)