



**INTERNATIONAL  
GEMOLOGICAL  
INSTITUTE**

**ELECTRONIC COPY**

**LABORATORY GROWN  
DIAMOND REPORT**

**LG593366231**

**IGI LABORATORY GROWN  
DIAMOND ID REPORT**

August 18, 2023

IGI Report Number **LG593366231**

**ROUND BRILLIANT**

**5.42 - 5.44 X 3.43 MM**

Carat Weight	0.63 CARAT
Color Grade	FANCY VIVID PINK
Clarity Grade	SI 1
Cut Grade	VERY GOOD
Polish	GOOD
Symmetry	VERY GOOD
Fluorescence	SLIGHT
Inscription(s)	LG593366231

Comments: This Laboratory Grown Diamond was created by Chemical Vapor Deposition (CVD) growth process. Indications of post-growth treatment.

**LABORATORY GROWN DIAMOND REPORT**

**IGI LABORATORY GROWN DIAMOND IDENTIFICATION REPORT**

August 18, 2023

IGI Report Number **LG593366231**

Description **LABORATORY GROWN DIAMOND**

Shape and Cutting Style **ROUND BRILLIANT**

Measurements **5.42 - 5.44 X 3.43 MM**

**GRADING RESULTS**

Carat Weight **0.63 CARAT**

Color Grade **FANCY VIVID PINK**

Clarity Grade **SI 1**

Cut Grade **VERY GOOD**

**ADDITIONAL GRADING INFORMATION**

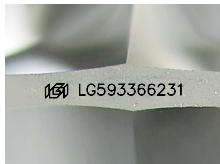
Polish **GOOD**

Symmetry **VERY GOOD**

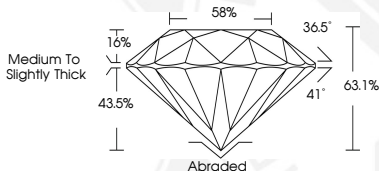
Fluorescence **SLIGHT**

Inscription(s) **LG593366231**

Comments: This Laboratory Grown Diamond was created by Chemical Vapor Deposition (CVD) growth process. Indications of post-growth treatment.



Sample Image Used



**IGI LABORATORY GROWN  
DIAMOND ID REPORT**

August 18, 2023

IGI Report Number **LG593366231**

**ROUND BRILLIANT**

**5.42 - 5.44 X 3.43 MM**

Carat Weight	0.63 CARAT
Color Grade	FANCY VIVID PINK
Clarity Grade	SI 1
Cut Grade	VERY GOOD
Polish	GOOD
Symmetry	VERY GOOD
Fluorescence	SLIGHT
Inscription(s)	LG593366231

Comments: This Laboratory Grown Diamond was created by Chemical Vapor Deposition (CVD) growth process. Indications of post-growth treatment.

THIS DOCUMENT WAS PRODUCED WITH THE FOLLOWING SECURITY MEASURES: SPECIAL DOCUMENT PAPER, INK SCREENS, WATERMARK, BACKGROUND DESIGN, HOLOGRAM AND OTHER SECURITY FEATURES NOT LISTED AND DO EXCEED DOCUMENT SECURITY INDUSTRY GUIDELINES.

For terms & conditions and to verify this report, please visit [www.igi.org](http://www.igi.org)