



**ELECTRONIC COPY**

**LABORATORY GROWN DIAMOND REPORT**

September 12, 2023  
 IGI Report Number **LG592327481**  
 Description **LABORATORY GROWN  
DIAMOND**  
 Shape and Cutting Style **CUSHION ANTIQUE BRILLIANT**  
 Measurements **10.10 X 10.01 X 6.10 MM**

**GRADING RESULTS**

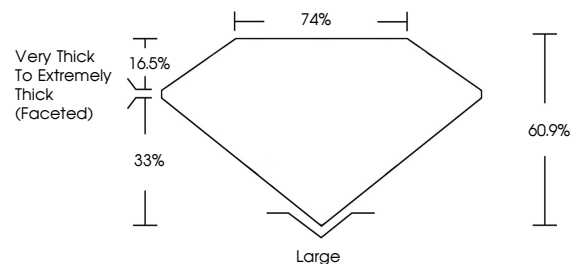
Carat Weight **6.01 CARATS**  
 Color Grade **G**  
 Clarity Grade **VS 1**  
 Cut Grade **VERY GOOD**

**ADDITIONAL GRADING INFORMATION**

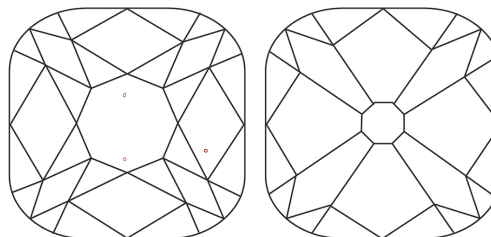
Polish **VERY GOOD**  
 Symmetry **GOOD**  
 Fluorescence **NONE**  
 Inscription(s) **IGI LG592327481**

Comments: This Laboratory Grown Diamond was created by Chemical Vapor Deposition (CVD) growth process and may include post-growth treatment. Type IIa

**PROPORTIONS**



**CLARITY CHARACTERISTICS**



**KEY TO SYMBOLS**

Red symbols indicate internal characteristics.  
 Green symbols indicate external characteristics.

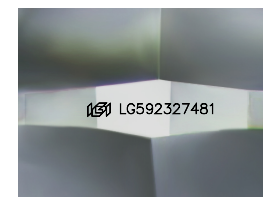
**GRADING SCALES**

**CLARITY**

IF	VVS <sup>1-2</sup>	VS <sup>1-2</sup>	SI <sup>1-2</sup>	I <sup>1-3</sup>
Internally Flawless	Very Very Slightly Included	Very Slightly Included	Slightly Included	Included

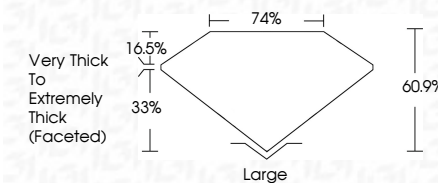
**COLOR**

D	E	F	G	H	I	J	Faint	Very Light	Light



Sample Image Used

September 12, 2023  
 IGI Report Number **LG592327481**  
 Description **LABORATORY GROWN  
DIAMOND**  
 Shape and Cutting Style **CUSHION ANTIQUE BRILLIANT**  
 Measurements **10.10 X 10.01 X 6.10 MM**  
**GRADING RESULTS**  
 Carat Weight **6.01 CARATS**  
 Color Grade **G**  
 Clarity Grade **VS 1**  
 Cut Grade **VERY GOOD**



**ADDITIONAL GRADING INFORMATION**

Polish **VERY GOOD**  
 Symmetry **GOOD**  
 Fluorescence **NONE**  
 Inscription(s) **IGI LG592327481**  
 Comments: This Laboratory Grown Diamond was created by Chemical Vapor Deposition (CVD) growth process and may include post-growth treatment. Type IIa



**IGI**



September 12, 2023  
 IGI Report No LG592327481  
**CUSHION ANTIQUE BRILLIANT**  
 10.10 X 10.01 X 6.10 MM  
 Carat Weight **6.01 CARATS**  
 Color Grade **G**  
 Clarity Grade **VS 1**  
 Cut Grade **VERY GOOD**  
 Depth **60.9%**  
 Table **16.5%**  
 Girdle **Very Thick To Extremely Thick (Faceted)**  
 Culet **Large**  
 Polish **VERY GOOD**  
 Symmetry **GOOD**  
 Fluorescence **NONE**  
 Inscription(s) **IGI LG592327481**  
 Comments: This Laboratory Grown Diamond was created by Chemical Vapor Deposition (CVD) growth process and may include post-growth treatment. Type IIa