



**ELECTRONIC COPY**

## LABORATORY GROWN DIAMOND REPORT

August 2, 2023	
IGI Report Number	LG592319582
Description	LABORATORY GROWN DIAMOND
Shape and Cutting Style	ROUND BRILLIANT
Measurements	13.41 - 13.47 X 8.28 MM

## GRADING RESULTS

Carat Weight	9.11 CARATS
Color Grade	F
Clarity Grade	VS 2
Cut Grade	IDEAL

### ADDITIONAL GRADING INFORMATION

Polish	EXCELLENT
Symmetry	EXCELLENT
Fluorescence	NONE
Inscription(s)	 LG592319582

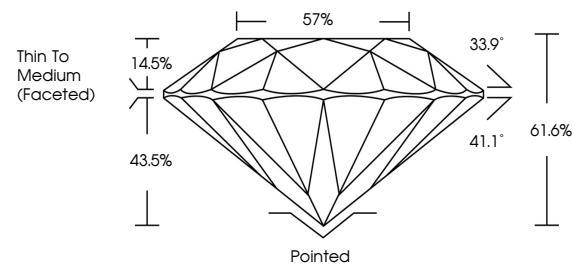
Comments: This Laboratory Grown Diamond was created by Chemical Vapor Deposition (CVD) growth process and may include post-growth treatment.  
Type IIa

## LABORATORY GROWN DIAMOND REPORT

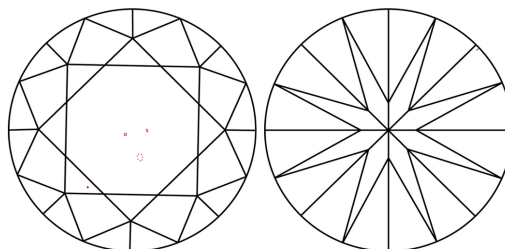
LG592319582

Report verification at [igi.org](http://igi.org)

## PROPORTIONS



## CLARITY CHARACTERISTICS



## KEY TO SYMBOLS

Red symbols indicate internal characteristics.  
Green symbols indicate external characteristics.

LABORATORY GROWN  
DIAMOND REPORT

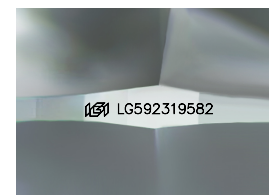
## GRADING SCALES

## CLARITY

IF	VVS <sup>1-2</sup>	VS <sup>1-2</sup>	SI <sup>1-2</sup>	I <sup>1-3</sup>
Internally Flawless	Very Very Slightly Included	Very Slightly Included	Slightly Included	Included

**COLOR**

D E F G H I J Faint Very Light Light



Sample Image Used



© IGI 2020, International Gemological Institute

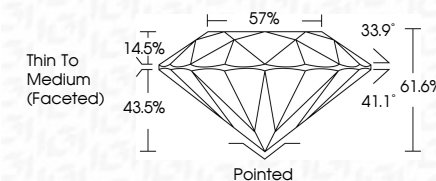
FD - 10 20

**www.igi.org**

## LABORATORY GROWN DIAMOND REPORT

August 2, 2023	
IGI Report Number	LG592319582
Description	LABORATORY GROWN DIAMOND
Shape and Cutting Style	ROUND BRILLIANT
Measurements	13.41 - 13.47 X 8.28 MM

Carat Weight	9.11 CARATS
Color Grade	F
Clarity Grade	VS 2
Cut Grade	IDEAL



### ADDITIONAL GRADING INFORMATION

Polish	EXCELLENT
Symmetry	EXCELLENT
Fluorescence	NONE
Inscription(s)	(15) LG592319582

Comments: This Laboratory Grown Diamond was created by Chemical Vapor Deposition (CVD) growth process and may include post-growth treatment.  
Type IIa



August 2, 2023	911 CABATS	V5.2	Portlet	Quiet	Comments:
GI Report No. LG520716582	F	IDEAL	EXCELLENT	Polish	Created by Crown Diamond user
GROUND BRILLIANT		61.6%	EXCEL	Symmetry	Created by Chemical Vapor Deposition
		57%	Thin To Medium (focused)	Fluorescence	CVD growth process and may include post-growth treatment.
				Inscriptions(s)	type IIG
13.41" x 13.47" x 8.28 MM					
Carat Weight					
Color Grade					
Clarity Grade					
Cut Grade					
Depth					
Table					
Girdle					