



**ELECTRONIC COPY**

## LABORATORY GROWN DIAMOND REPORT

|                         |                             |
|-------------------------|-----------------------------|
| July 21, 2023           |                             |
| IGI Report Number       | LG591377627                 |
| Description             | LABORATORY GROWN<br>DIAMOND |
| Shape and Cutting Style | PRINCESS CUT                |
| Measurements            | 9.03 X 8.86 X 5.69 MM       |

## GRADING RESULTS

|               |             |
|---------------|-------------|
| Carat Weight  | 4.02 CARATS |
| Color Grade   | I           |
| Clarity Grade | VS 2        |

### ADDITIONAL GRADING INFORMATION

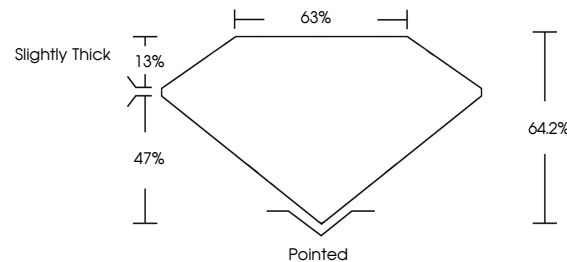
|                |   |
|----------------|---|
| Polish         | EXCELLENT   |
| Symmetry       | EXCELLENT   |
| Fluorescence   | NONE  |
| Inscription(s) |  LG591377627 |

Comments: This Laboratory Grown Diamond was created by Chemical Vapor Deposition (CVD) growth process and may include post-growth treatment. Type IIa

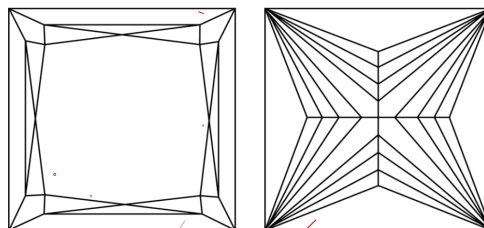
## LABORATORY GROWN DIAMOND REPORT

LG591377627  
Report verification at [igi.org](https://igi.org)

## PROPORTIONS



## CLARITY CHARACTERISTICS



### KEY TO SYMBOLS

Red symbols indicate internal characteristics.  
Green symbols indicate external characteristics.

LABORATORY GROWN  
DIAMOND REPORT

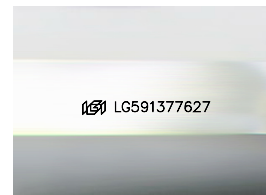
## GRADING SCALES

## CLARITY

| IF                  | VVS <sup>1-2</sup>          | VS <sup>1-2</sup>      | SI <sup>1-2</sup> | I <sup>1-3</sup> |
|---------------------|-----------------------------|------------------------|-------------------|------------------|
| Internally Flawless | Very Very Slightly Included | Very Slightly Included | Slightly Included | Included         |

**COLOR**

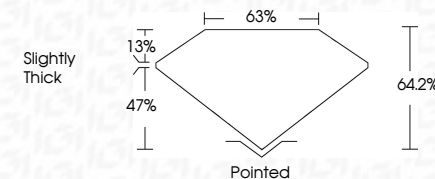
D E F G H I J Faint Very Light Light



Sample Image Used



|                         |                             |
|-------------------------|-----------------------------|
| July 21, 2023           |                             |
| IGI Report Number       | LG591377627                 |
| Description             | LABORATORY GROWN<br>DIAMOND |
| Shape and Cutting Style | PRINCESS CUT                |
| Measurements            | 9.03 X 8.86 X 5.69 MM       |
| <b>GRADING RESULTS</b>  |                             |
| Carat Weight            | 4.02 CARATS                 |
| Color Grade             | I                           |
| Clarity Grade           | VS 2                        |



### ADDITIONAL GRADING INFORMATION

|                |   |
|----------------|---|
| Polish         | EXCELLENT   |
| Symmetry       | EXCELLENT   |
| Fluorescence   | NONE  |
| Inscription(s) |  LG591377627 |

Comments: This Laboratory Grown Diamond was created by Chemical Vapor Deposition (CVD) growth process and may include post-growth treatment.  
Type IIa



© IGI 2020, International Gemological Institute

FD - 10 20



THIS DOCUMENT WAS PRODUCED WITH THE FOLLOWING SECURITY MEASURES: SPECIAL DOCUMENT PAPER, INK SCREENS, WATERMARK, BACKGROUND DESIGNS, HOLOGRAM AND OTHER SECURITY FEATURES NOT LISTED AND DO EXCEED DOCUMENT SECURITY INDUSTRY GUIDELINE

**www.igi.org**

July 21, 2023  
GI Report No LG591377627

|                           |                |
|---------------------------|----------------|
| G1 Report No. LG591377027 |                |
| FENNESSY CUT              |                |
| 4.02 CARATS               |                |
| Carat Weight              | VS 2           |
| Color Grade               | I              |
| Clarity Grade             | VS 2           |
| Depth                     | 64.2%          |
| Table                     | 65%            |
| Girdle                    | Slightly Thick |
| Culet                     | Pointed        |
| Polish                    | EXCELLENT      |
| Symmetry                  | EXCELLENT      |
| Fluorescence              | NONE           |

**Comments:**  
This Laboratory Grown Diamond was created by Chemical Vapor Deposition (CVD) growth process and may include post-growth treatment.