

ELECTRONIC COPY

LABORATORY GROWN DIAMOND REPORT

July 24, 2023	
IGI Report Number	LG591311727
Description	LABORATORY GROWN DIAMOND
Shape and Cutting Style	ROUND BRILLIANT
Measurements	6.81 - 6.83 X 4.24 MM

GRADING RESULTS

Carat Weight	1.22 CARAT
Color Grade	D
Clarity Grade	VVS 2
Cut Grade	IDEAL

ADDITIONAL GRADING INFORMATION

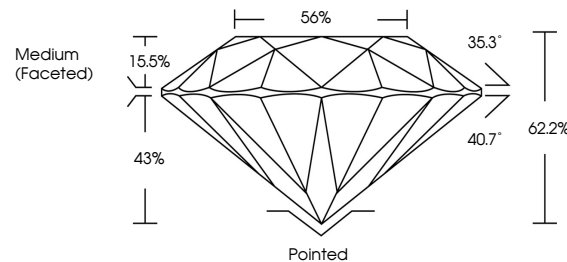
Polish	EXCELLENT
Symmetry	EXCELLENT
Fluorescence	NONE
Inscription(s)	 LG591311727

Comments: As Grown - No indication of post-growth treatment.
This Laboratory Grown Diamond was created by High Pressure High Temperature (HPHT) growth process.
Type II

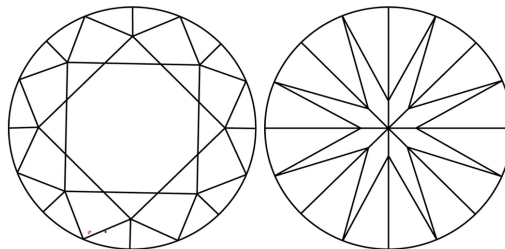
LABORATORY GROWN DIAMOND REPORT

LG591311727
Report verification at igi.org

PROPORTIONS



CLARITY CHARACTERISTICS



KEY TO SYMBOLS

Red symbols indicate internal characteristics.
Green symbols indicate external characteristics.

LABORATORY GROWN
DIAMOND REPORT

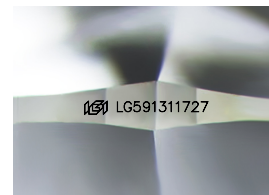
GRADING SCALES

CLARITY

IF	VVS ¹⁻²	VS ¹⁻²	SI ¹⁻²	I ¹⁻³
Internally Flawless	Very Very Slightly Included	Very Slightly Included	Slightly Included	Included

COLOR

D E F G H I J Faint Very Light Light



Sample Image Used



© IGI 2020, International Gemological Institute

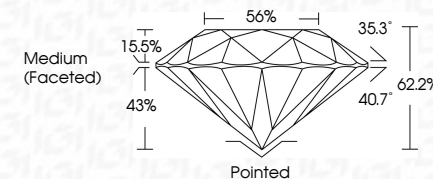
FD - 10 20

LABORATORY GROWN DIAMOND REPORT

July 24, 2023	
IGI Report Number	LG591311727
Description	LABORATORY GROWN DIAMOND
Shape and Cutting Style	ROUND BRILLIANT
Measurements	6.81 - 6.83 X 4.24 MM

GRADING RESULTS

Carat Weight	1.22 CARAT
Color Grade	D
Clarity Grade	VVS 2
Cut Grade	IDEAL



ADDITIONAL GRADING INFORMATION

Polish	EXCELLENT
Symmetry	EXCELLENT
Fluorescence	NONE
Inscription(s)	LG LG591311727
Comments: As Grown - No indication of post-growth treatment.	
This Laboratory Grown Diamond was created by High Pressure High Temperature (HPHT) growth process.	
Type II	



July 24, 2023	GL Report No. LG59131727	ROUND BRILLIANT	
Weight	1.61 - 1.63 X 4.24 MM	Color Grade	VVS 2
Carat Weight		Clarity Grade	IDEAL
Cut Grade		Depth	62.2%
Table		Girdle	56%
Culet		Medium (Faceted)	
Polish		Pointed	
Symmetry		EXCELLENT	
Fluorescence		EXCELLENT	
Inscriptions(s)		NONE	
		691 LG59131727	
Comments:		No indication of post-growth treatment.	
		This Laboratory Grown Diamond was created by High Pressure High Temperature (HPHT) growth process.	
		Type II	