



**ELECTRONIC COPY**

**LABORATORY GROWN DIAMOND REPORT**

LG588361463

Report verification at [igi.org](http://igi.org)

**LABORATORY GROWN  
DIAMOND REPORT**

**LABORATORY GROWN DIAMOND REPORT**

**LABORATORY GROWN DIAMOND REPORT**

August 10, 2023  
 IGI Report Number **LG588361463**  
 Description **LABORATORY GROWN  
DIAMOND**  
 Shape and Cutting Style **CUT CORNERED RECTANGULAR  
MODIFIED BRILLIANT**  
 Measurements **13.88 X 10.10 X 6.96 MM**

**GRADING RESULTS**

Carat Weight **8.27 CARATS**  
 Color Grade **FANCY VIVID BLUE**  
 Clarity Grade **VVS 2**  
 Cut Grade **EXCELLENT**

**ADDITIONAL GRADING INFORMATION**

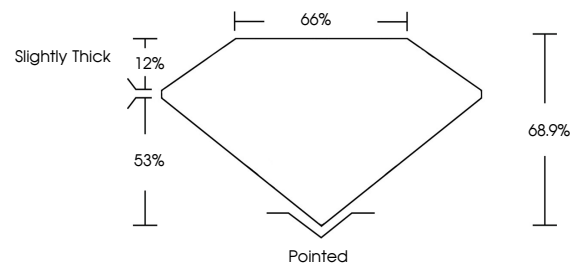
Polish **EXCELLENT**  
 Symmetry **EXCELLENT**  
 Fluorescence **NONE**  
 Inscription(s) **IGI LG588361463**

Comments: As Grown - No indication of post-growth treatment.  
 This Laboratory Grown Diamond was created by High Pressure High Temperature (HPHT) growth process.

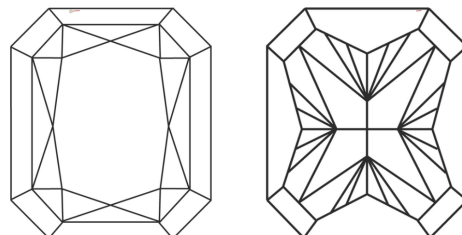
**COUNTRY OF ORIGIN** **UKRAINE**  
 Origin purported by the supplier



**PROPORTIONS**



**CLARITY CHARACTERISTICS**



**KEY TO SYMBOLS**

Red symbols indicate internal characteristics.  
 Green symbols indicate external characteristics.

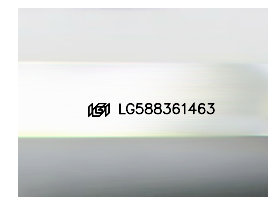
**GRADING SCALES**

**CLARITY**

IF	VVS <sup>1-2</sup>	VS <sup>1-2</sup>	SI <sup>1-2</sup>	I <sup>1-3</sup>
Internally Flawless	Very Very Slightly Included	Very Slightly Included	Slightly Included	Included

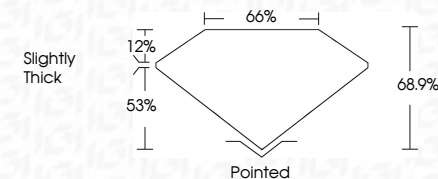
**COLOR**

D	E	F	G	H	I	J	Faint	Very Light	Light
Light Tint	Fancy Light	Fancy	Fancy Intense	Fancy Vivid					



Sample Image Used

August 10, 2023  
 IGI Report Number **LG588361463**  
 Description **LABORATORY GROWN  
DIAMOND**  
 Shape and Cutting Style **CUT CORNERED  
RECTANGULAR MODIFIED  
BRILLIANT**  
 Measurements **13.88 X 10.10 X 6.96 MM**  
**GRADING RESULTS**  
 Carat Weight **8.27 CARATS**  
 Color Grade **FANCY VIVID BLUE**  
 Clarity Grade **VVS 2**  
 Cut Grade **EXCELLENT**



**ADDITIONAL GRADING INFORMATION**

Polish **EXCELLENT**  
 Symmetry **EXCELLENT**  
 Fluorescence **NONE**  
 Inscription(s) **IGI LG588361463**  
 Comments: As Grown - No indication of post-growth treatment.  
 This Laboratory Grown Diamond was created by High Pressure High Temperature (HPHT) growth process.  
**COUNTRY OF ORIGIN** **UKRAINE**  
 Origin purported by the supplier



**IGI**

August 10, 2023  
 IGI Report No LG588361463  
**CUT CORNERED RECT. MODIFIED BRILLIANT**  
 13.88 X 10.10 X 6.96 MM  
 Carat Weight **8.27 CARATS**  
 Color Grade **FANCY VIVID BLUE**  
 Clarity Grade **VVS 2**  
 Cut Grade **EXCELLENT**  
 Depth **68.9%**  
 Table **66%**  
 Girdle **Slightly Thick**  
 Culet **Pointed**  
 Polish **EXCELLENT**  
 Symmetry **EXCELLENT**  
 Fluorescence **NONE**  
 Inscription(s) **IGI LG588361463**  
 Comments: As Grown - No indication of post-growth treatment.  
 This Laboratory Grown Diamond was created by High Pressure High Temperature (HPHT) growth process.