



ELECTRONIC COPY

LABORATORY GROWN DIAMOND REPORT

July 11, 2023	
IGI Report Number	LG588343542
Description	LABORATORY GROWN DIAMOND
Shape and Cutting Style	ROUND BRILLIANT
Measurements	8.70 - 8.74 X 5.27 MM

GRADING RESULTS

Carat Weight	2.45 CARATS
Color Grade	E
Clarity Grade	VVS 2
Cut Grade	IDEAL

ADDITIONAL GRADING INFORMATION

Polish	EXCELLENT
Symmetry	EXCELLENT
Fluorescence	NONE
Inscription(s)	 LG588343542

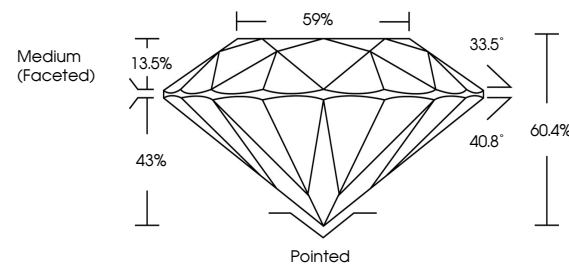
Comments: This Laboratory Grown Diamond was created by Chemical Vapor Deposition (CVD) growth process and may include post-growth treatment.
Type IIa

LABORATORY GROWN DIAMOND REPORT

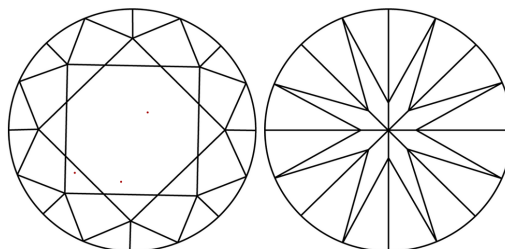
LG588343542

Report verification at igi.org

PROPORTIONS



CLARITY CHARACTERISTICS



KEY TO SYMBOLS

Red symbols indicate internal characteristics.
Green symbols indicate external characteristics.

LABORATORY GROWN
DIAMOND REPORT

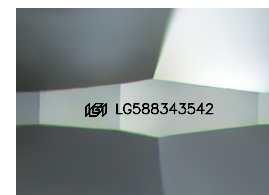
GRADING SCALES

CLARITY

IF	VVS ¹⁻²	VS ¹⁻²	SI ¹⁻²	I ¹⁻³
Internally Flawless	Very Very Slightly Included	Very Slightly Included	Slightly Included	Included

COLOR

D E F G H I J Faint Very Light Light



Sample Image Used



© IGI 2020, International Gemological Institute

FD - 10 20

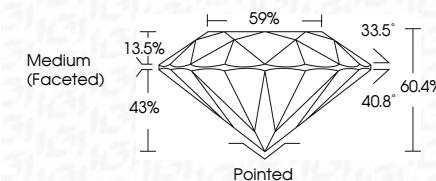


LABORATORY GROWN DIAMOND REPORT

July 11, 2023	
IGI Report Number	LG588343542
Description	LABORATORY GROWN DIAMOND
Shape and Cutting Style	ROUND BRILLIANT
Measurements	8.70 - 8.74 X 5.27 MM

GRADING RESULTS

Carat Weight	2.45 CARATS
Color Grade	E
Clarity Grade	VVS 2
Cut Grade	IDEAL



ADDITIONAL GRADING INFORMATION

Polish	EXCELLENT
Symmetry	EXCELLENT
Fluorescence	NONE
Inscription(s)	LG5883 LG588343542
<p>Comments: This Laboratory Grown Diamond was created by Chemical Vapor Deposition (CVD) growth process and may include post-growth treatment.</p> <p>Type IIa</p>	

July 11, 2023	G Report No. LG586946542	ROUND BRILLIANT
JW-70B - 8.7 X 5.27 MM	2.46 CARATS	E
Carat Weight	VVS 2	Color Grade
Clarity Grade	IDeAL	Cut Grade
Depth	60.4%	Table
Girdle	59%	Medium (Faceted)
Poleish	Polished	Symmetry
Fluorescence	EXCELLENT	Inscriptions(s)
Comments:	NONE	#GJLG586946542
The Laboratory Crown Diamond was created by Chemical Vapor Deposition growth process and may include post-growth treatment.		
Type IIa		