



INTERNATIONAL GEMOLOGICAL INSTITUTE

ELECTRONIC COPY

LABORATORY GROWN DIAMOND REPORT

LG586379771

LABORATORY GROWN DIAMOND REPORT

IGI LABORATORY GROWN DIAMOND IDENTIFICATION REPORT

June 22, 2023
IGI Report Number LG586379771
Description LABORATORY GROWN DIAMOND
Shape and Cutting Style EMERALD CUT
Measurements 6.63 X 4.54 X 2.96 MM

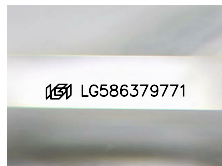
GRADING RESULTS

Carat Weight 0.84 CARAT
Color Grade E
Clarity Grade VS 2

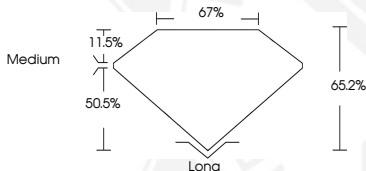
ADDITIONAL GRADING INFORMATION

Polish EXCELLENT
Symmetry EXCELLENT
Fluorescence NONE
Inscription(s) IGI LG586379771

Comments: This Laboratory Grown Diamond was created by Chemical Vapor Deposition (CVD) growth process and may include post-growth treatment. Type IIa



Sample Image Used



IGI LABORATORY GROWN DIAMOND ID REPORT

June 22, 2023
IGI Report Number LG586379771
EMERALD CUT
6.63 X 4.54 X 2.96 MM
Carat Weight 0.84 CARAT
Color Grade E
Clarity Grade VS 2
Polish EXCELLENT
Symmetry EXCELLENT
Fluorescence NONE
Inscription(s) IGI LG586379771
Comments: This Laboratory Grown Diamond was created by Chemical Vapor Deposition (CVD) growth process and may include post-growth treatment. Type IIa

IGI LABORATORY GROWN DIAMOND ID REPORT

June 22, 2023
IGI Report Number LG586379771
EMERALD CUT
6.63 X 4.54 X 2.96 MM
Carat Weight 0.84 CARAT
Color Grade E
Clarity Grade VS 2
Polish EXCELLENT
Symmetry EXCELLENT
Fluorescence NONE
Inscription(s) IGI LG586379771
Comments: This Laboratory Grown Diamond was created by Chemical Vapor Deposition (CVD) growth process and may include post-growth treatment. Type IIa



THIS DOCUMENT WAS PRODUCED WITH THE FOLLOWING SECURITY MEASURES: SPECIAL DOCUMENT PAPER, INK SCREENS, WATERMARK, BACKGROUND DESIGN, HOLOGRAM AND OTHER SECURITY FEATURES NOT LISTED AND DO EXCEED DOCUMENT SECURITY INDUSTRY GUIDELINES.

For terms & conditions and to verify this report, please visit www.igi.org