



ELECTRONIC COPY

LABORATORY GROWN DIAMOND REPORT

June 9, 2023
 IGI Report Number **LG585315810**
 Description **LABORATORY GROWN
DIAMOND**
 Shape and Cutting Style **SQUARE CUSHION BRILLIANT**
 Measurements **7.41 X 7.06 X 4.47 MM**

GRADING RESULTS

Carat Weight **1.81 CARAT**
 Color Grade **F**
 Clarity Grade **VVS 2**

ADDITIONAL GRADING INFORMATION

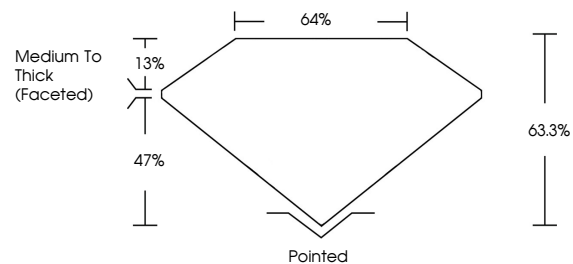
Polish **EXCELLENT**
 Symmetry **EXCELLENT**
 Fluorescence **NONE**
 Inscription(s) **IGI LG585315810**

Comments: This Laboratory Grown Diamond was created by Chemical Vapor Deposition (CVD) growth process and may include post-growth treatment. Type IIa

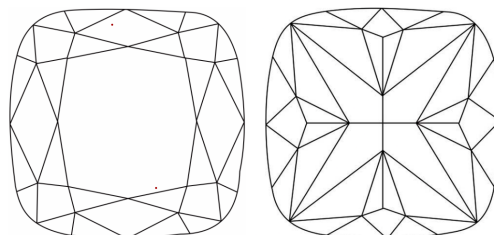
LABORATORY GROWN DIAMOND REPORT

LG585315810
 Report verification at igi.org

PROPORTIONS



CLARITY CHARACTERISTICS



KEY TO SYMBOLS

Red symbols indicate internal characteristics.
 Green symbols indicate external characteristics.

**LABORATORY GROWN
DIAMOND REPORT**

GRADING SCALES

CLARITY

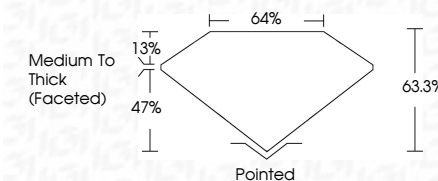
IF	VVS ¹⁻²	VS ¹⁻²	SI ¹⁻²	I ¹⁻³
Internally Flawless	Very Very Slightly Included	Very Slightly Included	Slightly Included	Included

COLOR

D	E	F	G	H	I	J	Faint	Very Light	Light
---	---	---	---	---	---	---	-------	------------	-------

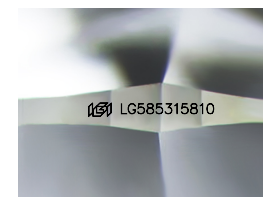
LABORATORY GROWN DIAMOND REPORT

June 9, 2023
 IGI Report Number **LG585315810**
 Description **LABORATORY GROWN
DIAMOND**
 Shape and Cutting Style **SQUARE CUSHION BRILLIANT**
 Measurements **7.41 X 7.06 X 4.47 MM**
GRADING RESULTS
 Carat Weight **1.81 CARAT**
 Color Grade **F**
 Clarity Grade **VVS 2**



ADDITIONAL GRADING INFORMATION

Polish **EXCELLENT**
 Symmetry **EXCELLENT**
 Fluorescence **NONE**
 Inscription(s) **IGI LG585315810**
 Comments: This Laboratory Grown Diamond was created by Chemical Vapor Deposition (CVD) growth process and may include post-growth treatment. Type IIa



Sample Image Used



IGI

June 9, 2023
 IGI Report No **LG585315810**
SQUARE CUSHION BRILLIANT
 7.41 X 7.06 X 4.47 MM
 Carat Weight **1.81 CARAT**
 Color Grade **F**
 Clarity Grade **VVS 2**
 Depth **63.3%**
 Table **64%**
 Girdle **Medium To Thick (Faceted)**
 Culet **Pointed**
 Polish **EXCELLENT**
 Symmetry **EXCELLENT**
 Fluorescence **NONE**
 Inscription(s) **IGI LG585315810**
 Comments: This Laboratory Grown Diamond was created by Chemical Vapor Deposition (CVD) growth process and may include post-growth treatment. Type IIa