



ELECTRONIC COPY

LABORATORY GROWN DIAMOND REPORT

June 9, 2023	
IGI Report Number	LG584354964
Description	LABORATORY GROWN DIAMOND
Shape and Cutting Style	ROUND BRILLIANT
Measurements	6.68 - 8.70 X 5.35 MM

GRADING RESULTS

Carat Weight	2.51 CARATS
Color Grade	FANCY INTENSE PINK
Clarity Grade	VS 1
Cut Grade	IDEAL

ADDITIONAL GRADING INFORMATION

Polish	EXCELLENT
Symmetry	EXCELLENT
Fluorescence	SLIGHT
Inscription(s)	LG584354964

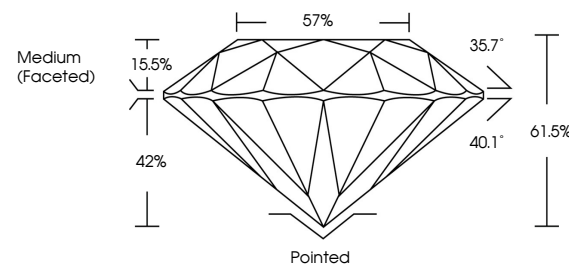
Comments: This Laboratory Grown Diamond was created by Chemical Vapor Deposition (CVD) growth process.
Indications of post-growth treatment.

LABORATORY GROWN DIAMOND REPORT

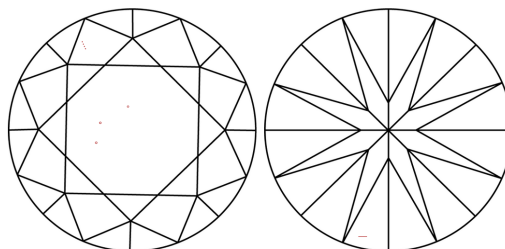
LG584354964

Report verification at igi.org

PROPORTIONS



CLARITY CHARACTERISTICS



KEY TO SYMBOLS

Red symbols indicate internal characteristics.
Green symbols indicate external characteristics.

LABORATORY GROWN
DIAMOND REPORT

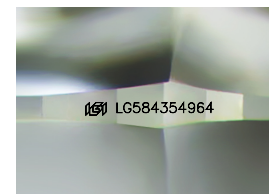
GRADING SCALES

CLARITY

IF	VVS ¹⁻²	VS ¹⁻²	SI ¹⁻²	I ¹⁻³
Internally Flawless	Very Very Slightly Included	Very Slightly Included	Slightly Included	Included

COLOR

D	E	F	G	H	I	J	Faint	Very Light	Light
Light Tint			Fancy Light		Fancy		Fancy Intense		Fancy Vivid



Sample Image Used



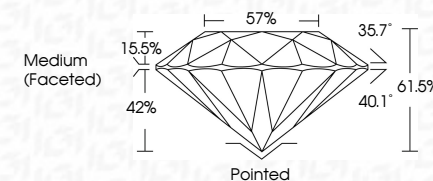
© IGI 2020, International Gemological Institute

FD - 10 20



LABORATORY GROWN DIAMOND REPORT

June 9, 2023	
IGI Report Number	LG584354964
Description	LABORATORY GROWN DIAMOND
Shape and Cutting Style	ROUND BRILLIANT
Measurements	8.68 - 8.70 X 5.35 MM
GRADING RESULTS	
Carat Weight	2.51 CARATS
Color Grade	FANCY INTENSE PINK
Clarity Grade	VS 1
Cut Grade	IDEAL



ADDITIONAL GRADING INFORMATION

Polish	EXCELLENT
Symmetry	EXCELLENT
Fluorescence	SLIGHT
Inscription(s)	LG5 LG584354964
<p>Comments: This Laboratory Grown Diamond was created by Chemical Vapor Deposition (CVD) growth process.</p> <p>Indications of post-growth treatment.</p>	

June 9, 2023	Carat Weight	2.51 CARATS
G Report No. G584354964	Color Grade	FANCY INTENSE PINK
ROUND BRILLIANT	Clarity Grade	VS 1
	Depth	IDEAL
	Table	61.5%
	Girdle	57%
		Medium (Faceted)
	Culet	Pointed
	Polish	EXCELLENT
	Symmetry	EXCELLENT
	Fluorescence	SLIGHT
	Inscriptions(s)	469 LG584354964
	Comments:	The Laboratory Grown Diamond was created by Chemical Vapor Deposition (CVD) and shows no visible indications of post-growth treatment.