



ELECTRONIC COPY

LABORATORY GROWN DIAMOND REPORT

June 12, 2023	
IGI Report Number	LG584353593
Description	LABORATORY GROWN DIAMOND
Shape and Cutting Style	EMERALD CUT
Measurements	7.84 X 5.47 X 3.62 MM

GRADING RESULTS

Carat Weight	1.52 CARAT
Color Grade	FANCY INTENSE PINK
Clarity Grade	VS 1

ADDITIONAL GRADING INFORMATION

Polish	EXCELLENT
Symmetry	EXCELLENT
Fluorescence	SLIGHT
Inscription(s)	 LG584353593

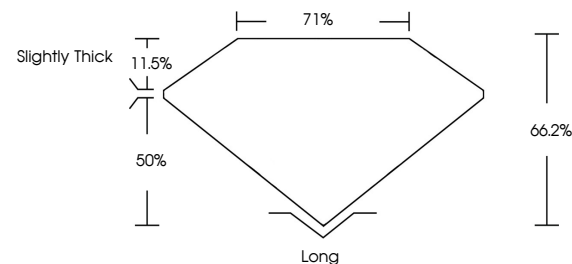
Comments: This Laboratory Grown Diamond was created by Chemical Vapor Deposition (CVD) growth process.
Indications of post-growth treatment.

Secondary color: Orange

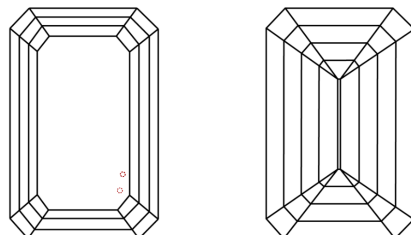
LABORATORY GROWN DIAMOND REPORT

LG584353593
Report verification at igi.org

PROPORTIONS



CLARITY CHARACTERISTICS



KEY TO SYMBOLS

Red symbols indicate internal characteristics.
Green symbols indicate external characteristics.

LABORATORY GROWN
DIAMOND REPORT

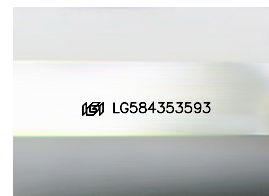
GRADING SCALES

CLARITY

IF	VVS ¹⁻²	VS ¹⁻²	SI ¹⁻²	I ¹⁻³
Internally Flawless	Very Very Slightly Included	Very Slightly Included	Slightly Included	Included

COLOR

D	E	F	G	H	I	J	Faint	Very Light	Light
Light Tint			Fancy Light			Fancy	Fancy Intense	Fancy Vivid	



Sample Image Used



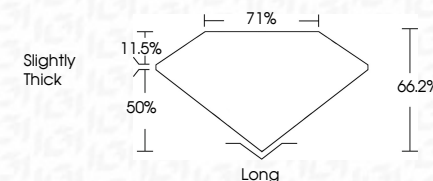
© IGI 2020, International Gemological Institute

FD - 10 20



LABORATORY GROWN DIAMOND REPORT

June 12, 2023	
IGI Report Number	LG584353593
Description	LABORATORY GROWN DIAMOND
Shape and Cutting Style	EMERALD CUT
Measurements	7.84 X 5.47 X 3.62 MM
GRADING RESULTS	
Carat Weight	1.52 CARAT
Color Grade	FANCY INTENSE PINK
Clarity Grade	VS 1



ADDITIONAL GRADING INFORMATION

Polish	EXCELLENT
Symmetry	EXCELLENT
Fluorescence	SLIGHT
Inscription(s)	 LG584353593
<p>Comments: This Laboratory Grown Diamond was created by Chemical Vapor Deposition (CVD) growth process.</p> <p>Indications of post-growth treatment.</p>	

Secondary color: Orange

June 12, 2023
 CGI Report No LG584353593
 EVERALD CITE

1.84 X 5.47 X 3.62 MM	1.82 CARAT	VS 1	Long
	FANCY INTENSE PINK	66.2%	EXCELLENT
		71%	EXCELLENT
		Slightly Thick	SLIGHT
			4mm 1.00 carat 100%

Comments:
This Laboratory Grown Diamond was created by Chemical Vapor Deposition (CVD) growth process.
Indications of post-growth treatment.