



ELECTRONIC COPY

LABORATORY GROWN DIAMOND REPORT

May 27, 2023
 IGI Report Number **LG583333161**
 Description **LABORATORY GROWN
DIAMOND**
 Shape and Cutting Style **ROUND ROSE CUT**
 Measurements **9.59 X 9.69 X 4.52 MM**

GRADING RESULTS

Carat Weight **3.02 CARATS**
 Color Grade **H**
 Clarity Grade **VS 1**

ADDITIONAL GRADING INFORMATION

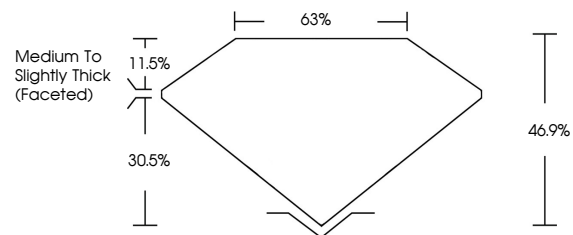
Polish **EXCELLENT**
 Symmetry **EXCELLENT**
 Fluorescence **NONE**
 Inscription(s) **IGI LG583333161**

Comments: This Laboratory Grown Diamond was created by Chemical Vapor Deposition (CVD) growth process and may include post-growth treatment. Type IIa

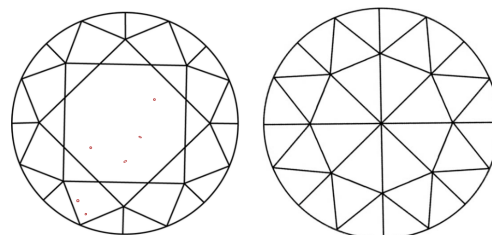
LABORATORY GROWN DIAMOND REPORT

LG583333161
 Report verification at igi.org

PROPORTIONS



CLARITY CHARACTERISTICS



KEY TO SYMBOLS

Red symbols indicate internal characteristics.
 Green symbols indicate external characteristics.

**LABORATORY GROWN
DIAMOND REPORT**

GRADING SCALES

CLARITY

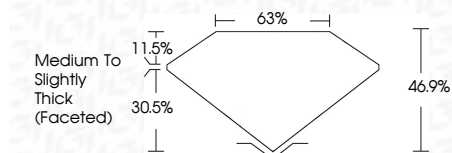
| IF | VVS ¹⁻² | VS ¹⁻² | SI ¹⁻² | I ¹⁻³ |
|---------------------|-----------------------------|------------------------|-------------------|------------------|
| Internally Flawless | Very Very Slightly Included | Very Slightly Included | Slightly Included | Included |

COLOR

| D | E | F | G | H | I | J | Faint | Very Light | Light |
|---|---|---|---|---|---|---|-------|------------|-------|
|---|---|---|---|---|---|---|-------|------------|-------|

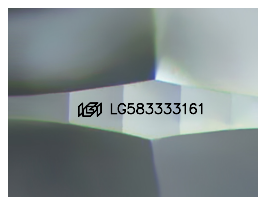
LABORATORY GROWN DIAMOND REPORT

May 27, 2023
 IGI Report Number **LG583333161**
 Description **LABORATORY GROWN
DIAMOND**
 Shape and Cutting Style **ROUND ROSE CUT**
 Measurements **9.59 X 9.69 X 4.52 MM**
GRADING RESULTS
 Carat Weight **3.02 CARATS**
 Color Grade **H**
 Clarity Grade **VS 1**



ADDITIONAL GRADING INFORMATION

Polish **EXCELLENT**
 Symmetry **EXCELLENT**
 Fluorescence **NONE**
 Inscription(s) **IGI LG583333161**
 Comments: This Laboratory Grown Diamond was created by Chemical Vapor Deposition (CVD) growth process and may include post-growth treatment. Type IIa



Sample Image Used



IGI

May 27, 2023
 IGI Report No **LG583333161**
ROUND ROSE CUT
 Carat Weight **3.02 CARATS**
 Color Grade **H**
 Clarity Grade **VS 1**
 Depth **46.9%**
 Table **63%**
 Girdle **Medium to Slightly Thick (Faceted)**
 Culet **EXCELLENT**
 Polish **EXCELLENT**
 Symmetry **EXCELLENT**
 Fluorescence **NONE**
 Inscription(s) **IGI LG583333161**

Comments: This Laboratory Grown Diamond was created by Chemical Vapor Deposition (CVD) growth process and may include post-growth treatment. Type IIa