



# INTERNATIONAL GEMOLOGICAL INSTITUTE

ELECTRONIC COPY

## LABORATORY GROWN DIAMOND REPORT

LG582366419

### IGI LABORATORY GROWN DIAMOND ID REPORT

May 17, 2023

IGI Report Number **LG582366419**

**CUT CORNERED RECTANGULAR  
MODIFIED BRILLIANT**

**6.55 X 4.53 X 3.12 MM**

Carat Weight	0.82 CARAT
Color Grade	G
Clarity Grade	SI 1
Polish	EXCELLENT
Symmetry	EXCELLENT
Fluorescence	NONE
Inscription(s)	LG582366419

Comments: This Laboratory Grown Diamond was created by Chemical Vapor Deposition (CVD) growth process and may include post-growth treatment. Type Ila

## LABORATORY GROWN DIAMOND REPORT

### IGI LABORATORY GROWN DIAMOND IDENTIFICATION REPORT

May 17, 2023

IGI Report Number

LG582366419

Description **LABORATORY GROWN DIAMOND**

Shape and Cutting Style **CUT CORNERED RECTANGULAR MODIFIED  
BRILLIANT**

Measurements **6.55 X 4.53 X 3.12 MM**

### GRADING RESULTS

Carat Weight 0.82 CARAT

Color Grade G

Clarity Grade SI 1

### ADDITIONAL GRADING INFORMATION

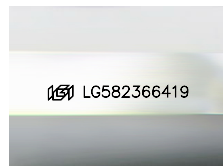
Polish EXCELLENT

Symmetry EXCELLENT

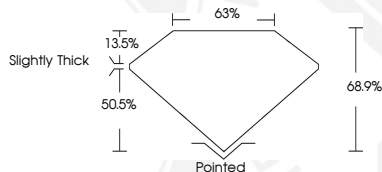
Fluorescence NONE

Inscription(s) LG582366419

Comments: This Laboratory Grown Diamond was created by Chemical Vapor Deposition (CVD) growth process and may include post-growth treatment.  
Type Ila



Sample Image Used



### IGI LABORATORY GROWN DIAMOND ID REPORT

May 17, 2023

IGI Report Number **LG582366419**

**CUT CORNERED RECTANGULAR  
MODIFIED BRILLIANT**

**6.55 X 4.53 X 3.12 MM**

Carat Weight	0.82 CARAT
Color Grade	G
Clarity Grade	SI 1
Polish	EXCELLENT
Symmetry	EXCELLENT
Fluorescence	NONE
Inscription(s)	LG582366419

Comments: This Laboratory Grown Diamond was created by Chemical Vapor Deposition (CVD) growth process and may include post-growth treatment. Type Ila



THIS DOCUMENT WAS PRODUCED WITH THE FOLLOWING SECURITY MEASURES: SPECIAL DOCUMENT PAPER, INK SCREENS, WATERMARK, BACKGROUND DESIGN, HOLOGRAM AND OTHER SECURITY FEATURES NOT LISTED AND DO EXCEED DOCUMENT SECURITY INDUSTRY GUIDELINES.

For terms & conditions and to verify this report, please visit [www.igi.org](http://www.igi.org)