



ELECTRONIC COPY

LABORATORY GROWN DIAMOND REPORT

May 13, 2023	
IGI Report Number	LG582361220
Description	LABORATORY GROWN DIAMOND
Shape and Cutting Style	CUSHION BRILLIANT
Measurements	7.42 X 6.10 X 4.01 MM

GRADING RESULTS

Carat Weight	1.40 CARAT
Color Grade	F
Clarity Grade	VS 1

ADDITIONAL GRADING INFORMATION

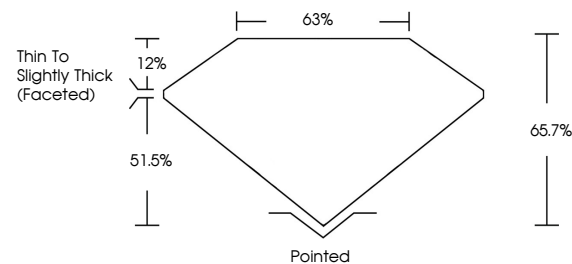
Polish	EXCELLENT
Symmetry	EXCELLENT
Fluorescence	NONE
Inscription(s)	 LG582361220

Comments: This Laboratory Grown Diamond was created by Chemical Vapor Deposition (CVD) growth process and may include post-growth treatment.
Type IIa

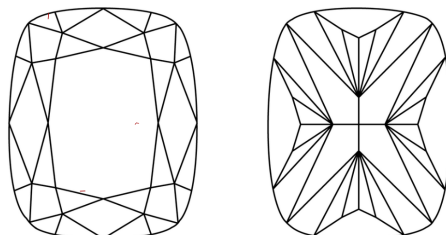
LABORATORY GROWN DIAMOND REPORT

LG582361220
Report verification at igi.org

PROPORTIONS



CLARITY CHARACTERISTICS



KEY TO SYMBOLS

Red symbols indicate internal characteristics.
Green symbols indicate external characteristics.

LABORATORY GROWN
DIAMOND REPORT

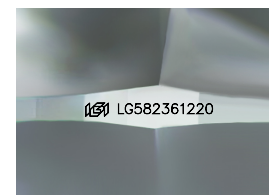
GRADING SCALES

CLARITY

IF	VVS ¹⁻²	VS ¹⁻²	SI ¹⁻²	I ¹⁻³
Internally Flawless	Very Very Slightly Included	Very Slightly Included	Slightly Included	Included

COLOR

D E F G H I J Faint Very Light Light



Sample Image Used



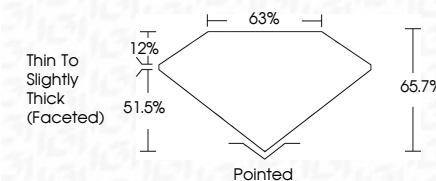
© IGI 2020, International Gemological Institute

FD - 10 20

www.igi.org

LABORATORY GROWN DIAMOND REPORT

May 13, 2023	
IGI Report Number	LG582361220
Description	LABORATORY GROWN DIAMOND
Shape and Cutting Style	CUSHION BRILLIANT
Measurements	7.42 X 6.10 X 4.01 MM
GRADING RESULTS	
Carat Weight	1.40 CARAT
Color Grade	F
Clarity Grade	VS 1



ADDITIONAL GRADING INFORMATION

Polish	EXCELLENT
Symmetry	EXCELLENT
Fluorescence	NONE
Inscription(s)	(16) LG582361220

Comments: This Laboratory Grown Diamond was created by Chemical Vapor Deposition (CVD) growth process and may include post-growth treatment.
Type IIa



May 19, 2023	GI Pearl No. LG5826361220	CUSHION BRILLANT	1.40 CARAT	VS 1	68.7%	65%	Thin to slightly thick (faceted)	Pointed	EXCELLENT	EXCELLENT	NONE	689 LG5826361220
			Carat Weight	Color Grade	Clarity Grade	Depth	Table	Girdle	Culet	Polish	Fluorescence	Inscriptions(s)
			42 X 42 X 4.01 MM									

Comments:
 This lot is a Crown Diamond was
 certified by Chemical Vapor Deposition
 (CVD) growth process and may include
 post-growth treatment.
 Type IIa