



ELECTRONIC COPY

LABORATORY GROWN DIAMOND REPORT

May 13, 2023	
IGI Report Number	LG581338257
Description	LABORATORY GROWN DIAMOND
Shape and Cutting Style	ROUND BRILLIANT
Measurements	6.56 - 6.59 X 4.12 MM

GRADING RESULTS

Carat Weight	1.11 CARAT
Color Grade	H
Clarity Grade	VS 1
Cut Grade	EXCELLENT

ADDITIONAL GRADING INFORMATION

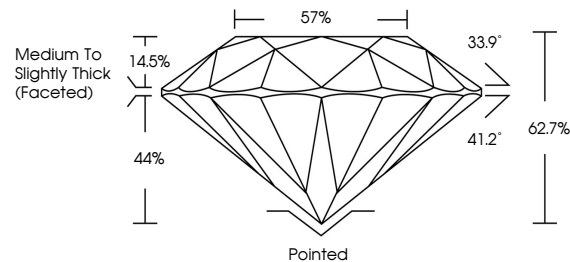
Polish	EXCELLENT
Symmetry	EXCELLENT
Fluorescence	NONE
Inscription(s)	 LG581338257

Comments: This Laboratory Grown Diamond was created by Chemical Vapor Deposition (CVD) growth process and may include post-growth treatment.
Type IIa

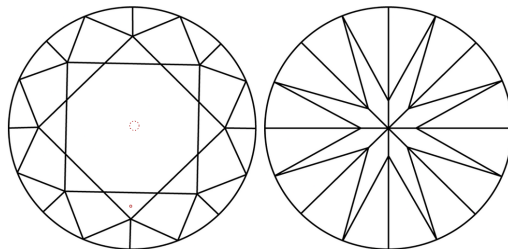
LABORATORY GROWN DIAMOND REPORT

LG581338257
Report verification at igi.org

PROPORTIONS



CLARITY CHARACTERISTICS



KEY TO SYMBOLS

Red symbols indicate internal characteristics.
Green symbols indicate external characteristics.

LABORATORY GROWN
DIAMOND REPORT

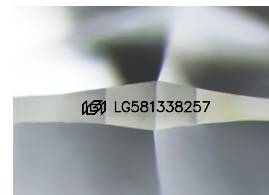
GRADING SCALES

CLARITY

IF	VVS ¹⁻²	VS ¹⁻²	SI ¹⁻²	I ¹⁻³
Internally Flawless	Very Very Slightly Included	Very Slightly Included	Slightly Included	Included

COLOR

D E F G H I J Faint Very Light Light



Sample Image Used



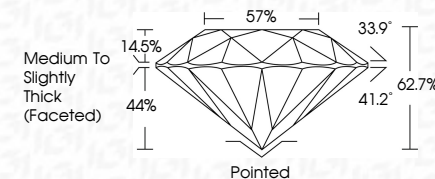
© IGI 2020, International Gemological Institute

FD - 10 20

LABORATORY GROWN DIAMOND REPORT

May 13, 2023	
IGI Report Number	LG581338257
Description	LABORATORY GROWN DIAMOND
Shape and Cutting Style	ROUND BRILLIANT
Measurements	6.56 - 6.59 X 4.12 MM

Carat Weight	1.11 CARAT
Color Grade	H
Clarity Grade	VS 1
Cut Grade	EXCELLENT



ADDITIONAL GRADING INFORMATION

Polish	EXCELLENT
Symmetry	EXCELLENT
Fluorescence	NONE
Inscription(s)	15 LG58133825

Comments: This Laboratory Grown Diamond was created by Chemical Vapor Deposition (CVD) growth process and may include post-growth treatment.
Type IIa



May 13, 2023	GI Report No. G581339257	ROUND BRILLIANT	5.56 x 4.69 x 4.12 MM	1.11 CARAT	H	VS 1	EXCELLENT	62.7%	57%	Medium to Slightly Thick (Faceted)	Ported	EXCELLENT	EXCELLENT	NONE	491 US561339257	<p>Comments:</p> <p>Color: Brown Diamond was created by Chemical Vapor Deposition (CVD) growth process and may include post-growth treatment.</p> <p>Type: IIA</p>
					Color Grade	Clarity Grade	Depth	Table	Girdle		Color	Polish	Symmetry	Fluorescence	Inscription(s)	