



**INTERNATIONAL  
GEMOLOGICAL  
INSTITUTE**

**ELECTRONIC COPY**

**LABORATORY GROWN  
DIAMOND REPORT**

**LG581331257**

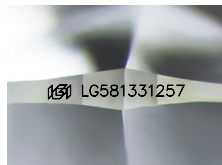
**IGI LABORATORY GROWN  
DIAMOND ID REPORT**

July 14, 2023  
IGI Report Number **LG581331257**  
**ROUND BRILLIANT**  
**5.32 - 5.36 X 3.40 MM**  
Carat Weight 0.60 CARAT  
Color Grade FANCY VIVID BLUE  
Clarity Grade VS 2  
Cut Grade EXCELLENT  
Polish EXCELLENT  
Symmetry EXCELLENT  
Fluorescence NONE  
Inscription(s) LG581331257

**LABORATORY GROWN DIAMOND REPORT**

**IGI LABORATORY GROWN DIAMOND IDENTIFICATION REPORT**

July 14, 2023  
IGI Report Number LG581331257  
Description LABORATORY GROWN DIAMOND  
Shape and Cutting Style ROUND BRILLIANT  
Measurements 5.32 - 5.36 X 3.40 MM



Sample Image Used

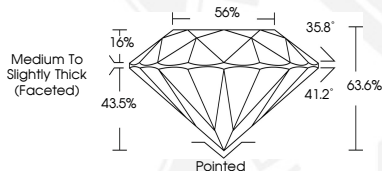
**GRADING RESULTS**

Carat Weight 0.60 CARAT  
Color Grade FANCY VIVID BLUE  
Clarity Grade VS 2  
Cut Grade EXCELLENT

**ADDITIONAL GRADING INFORMATION**

Polish EXCELLENT  
Symmetry EXCELLENT  
Fluorescence NONE  
Inscription(s) LG581331257

Comments: As Grown - No indication of post-growth treatment. This Laboratory Grown Diamond was created by High Pressure High Temperature (HPHT) growth process.



**IGI LABORATORY GROWN  
DIAMOND ID REPORT**

July 14, 2023  
IGI Report Number **LG581331257**  
**ROUND BRILLIANT**  
**5.32 - 5.36 X 3.40 MM**  
Carat Weight 0.60 CARAT  
Color Grade FANCY VIVID BLUE  
Clarity Grade VS 2  
Cut Grade EXCELLENT  
Polish EXCELLENT  
Symmetry EXCELLENT  
Fluorescence NONE  
Inscription(s) LG581331257

Comments: As Grown - No indication of post-growth treatment. This Laboratory Grown Diamond was created by High Pressure High Temperature (HPHT) growth process.

THIS DOCUMENT WAS PRODUCED WITH THE FOLLOWING SECURITY MEASURES: SPECIAL DOCUMENT PAPER, INK SCREENS, WATERMARK, BACKGROUND DESIGN, HOLOGRAM AND OTHER SECURITY FEATURES NOT LISTED AND DO EXCEED DOCUMENT SECURITY INDUSTRY GUIDELINES.

For terms & conditions and to verify this report, please visit [www.igi.org](http://www.igi.org)