



# INTERNATIONAL GEMOLOGICAL INSTITUTE

ELECTRONIC COPY

## LABORATORY GROWN DIAMOND REPORT

LG581331238

### LABORATORY GROWN DIAMOND REPORT

#### IGI LABORATORY GROWN DIAMOND IDENTIFICATION REPORT

July 11, 2023  
IGI Report Number LG581331238  
Description LABORATORY GROWN DIAMOND  
Shape and Cutting Style ROUND BRILLIANT  
Measurements 4.47 - 4.51 X 2.73 MM

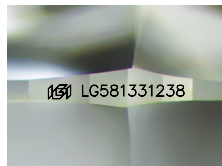
#### GRADING RESULTS

Carat Weight 0.33 CARAT  
Color Grade FANCY INTENSE BLUE  
Clarity Grade INTERNALLY FLAWLESS  
Cut Grade EXCELLENT

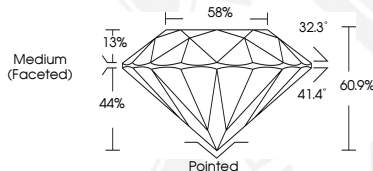
#### ADDITIONAL GRADING INFORMATION

Polish EXCELLENT  
Symmetry EXCELLENT  
Fluorescence NONE  
Inscription(s) IGI LG581331238

Comments: As Grown - No indication of post-growth treatment.  
This Laboratory Grown Diamond was created by High Pressure High Temperature (HPHT) growth process.



Sample Image Used



#### IGI LABORATORY GROWN DIAMOND ID REPORT

July 11, 2023  
IGI Report Number LG581331238  
ROUND BRILLIANT  
4.47 - 4.51 X 2.73 MM  
Carat Weight 0.33 CARAT  
Color Grade FANCY INTENSE BLUE  
Clarity Grade IF.  
Cut Grade EXCELLENT  
Polish EXCELLENT  
Symmetry EXCELLENT  
Fluorescence NONE  
Inscription(s) IGI LG581331238  
Comments: As Grown - No indication of post-growth treatment. This Laboratory Grown Diamond was created by High Pressure High Temperature (HPHT) growth process.

#### IGI LABORATORY GROWN DIAMOND ID REPORT

July 11, 2023  
IGI Report Number LG581331238  
ROUND BRILLIANT  
4.47 - 4.51 X 2.73 MM  
Carat Weight 0.33 CARAT  
Color Grade FANCY INTENSE BLUE  
Clarity Grade IF.  
Cut Grade EXCELLENT  
Polish EXCELLENT  
Symmetry EXCELLENT  
Fluorescence NONE  
Inscription(s) IGI LG581331238  
Comments: As Grown - No indication of post-growth treatment. This Laboratory Grown Diamond was created by High Pressure High Temperature (HPHT) growth process.



THIS DOCUMENT WAS PRODUCED WITH THE FOLLOWING SECURITY MEASURES: SPECIAL DOCUMENT PAPER, INK SCREENS, WATERMARK, BACKGROUND DESIGN, HOLOGRAM AND OTHER SECURITY FEATURES NOT LISTED AND DO EXCEED DOCUMENT SECURITY INDUSTRY GUIDELINES.

For terms & conditions and to verify this report, please visit [www.igi.org](http://www.igi.org)