



**INTERNATIONAL
GEMOLOGICAL
INSTITUTE**

ELECTRONIC COPY

**LABORATORY GROWN
DIAMOND REPORT**

LG581330946

**IGI LABORATORY GROWN
DIAMOND ID REPORT**

May 12, 2023

IGI Report Number **LG581330946**

**CUT CORNERED SQUARE
MODIFIED BRILLIANT**

5.33 X 5.04 X 3.52 MM

Carat Weight 0.90 CARAT
Color Grade FANCY VIVID BLUE
Clarity Grade VS 2
Cut Grade VERY GOOD
Polish EXCELLENT
Symmetry EXCELLENT
Fluorescence NONE
Inscription(s) LG581330946

Comments: As Grown - No indication of post-growth treatment. This Laboratory Grown Diamond was created by High Pressure High Temperature (HPHT) growth process.

LABORATORY GROWN DIAMOND REPORT

IGI LABORATORY GROWN DIAMOND IDENTIFICATION REPORT

May 12, 2023

IGI Report Number LG581330946

Description LABORATORY GROWN DIAMOND

Shape and Cutting Style CUT CORNERED SQUARE MODIFIED BRILLIANT

Measurements 5.33 X 5.04 X 3.52 MM

GRADING RESULTS

Carat Weight 0.90 CARAT

Color Grade FANCY VIVID BLUE

Clarity Grade VS 2

Cut Grade VERY GOOD

ADDITIONAL GRADING INFORMATION

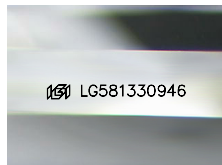
Polish EXCELLENT

Symmetry EXCELLENT

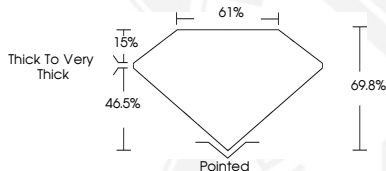
Fluorescence NONE

Inscription(s) LG581330946

Comments: As Grown - No indication of post-growth treatment. This Laboratory Grown Diamond was created by High Pressure High Temperature (HPHT) growth process.



Sample Image Used



**IGI LABORATORY GROWN
DIAMOND ID REPORT**

May 12, 2023

IGI Report Number **LG581330946**

**CUT CORNERED SQUARE
MODIFIED BRILLIANT**

5.33 X 5.04 X 3.52 MM

Carat Weight 0.90 CARAT
Color Grade FANCY VIVID BLUE
Clarity Grade VS 2
Cut Grade VERY GOOD
Polish EXCELLENT
Symmetry EXCELLENT
Fluorescence NONE
Inscription(s) LG581330946

Comments: As Grown - No indication of post-growth treatment. This Laboratory Grown Diamond was created by High Pressure High Temperature (HPHT) growth process.

THIS DOCUMENT WAS PRODUCED WITH THE FOLLOWING SECURITY MEASURES: SPECIAL DOCUMENT PAPER, INK SCREENS, WATERMARK, BACKGROUND DESIGN, HOLOGRAM AND OTHER SECURITY FEATURES NOT LISTED AND DO EXCEED DOCUMENT SECURITY INDUSTRY GUIDELINES.

For terms & conditions and to verify this report, please visit www.igi.org