



**INTERNATIONAL  
GEMOLOGICAL  
INSTITUTE**

**ELECTRONIC COPY**

**LABORATORY GROWN  
DIAMOND REPORT**

**LG579362541**

**IGI LABORATORY GROWN  
DIAMOND ID REPORT**

May 18, 2023

IGI Report Number **LG579362541**

**ROUND BRILLIANT**

**4.29 - 4.32 X 2.79 MM**

Carat Weight	0.32 CARAT
Color Grade	FANCY BLACK
Clarity Grade	SI 2
Cut Grade	VERY GOOD
Polish	EXCELLENT
Symmetry	VERY GOOD
Fluorescence	NONE
Inscription(s)	LG579362541

Comments: As Grown - No indication of post-growth treatment. This Laboratory Grown Diamond was created by High Pressure High Temperature (HPHT) growth process.

**COUNTRY OF ORIGIN : UKRAINE**

Origin purported by the supplier

**LABORATORY GROWN DIAMOND REPORT**

**IGI LABORATORY GROWN DIAMOND IDENTIFICATION REPORT**

May 18, 2023

IGI Report Number **LG579362541**

Description **LABORATORY GROWN DIAMOND**

Shape and Cutting Style **ROUND BRILLIANT**

Measurements **4.29 - 4.32 X 2.79 MM**

**GRADING RESULTS**

Carat Weight **0.32 CARAT**

Color Grade **FANCY BLACK**

Clarity Grade **SI 2**

Cut Grade **VERY GOOD**

**ADDITIONAL GRADING INFORMATION**

Polish **EXCELLENT**

Symmetry **VERY GOOD**

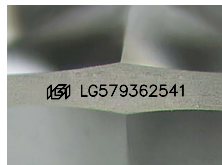
Fluorescence **NONE**

Inscription(s) **LG579362541**

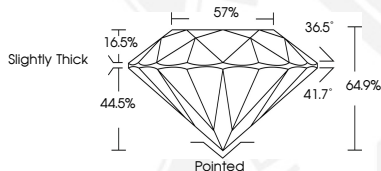
Comments: As Grown - No indication of post-growth treatment. This Laboratory Grown Diamond was created by High Pressure High Temperature (HPHT) growth process.

**COUNTRY OF ORIGIN : UKRAINE**

Origin purported by the supplier



Sample Image Used



**IGI LABORATORY GROWN  
DIAMOND ID REPORT**

May 18, 2023

IGI Report Number **LG579362541**

**ROUND BRILLIANT**

**4.29 - 4.32 X 2.79 MM**

Carat Weight	0.32 CARAT
Color Grade	FANCY BLACK
Clarity Grade	SI 2
Cut Grade	VERY GOOD
Polish	EXCELLENT
Symmetry	VERY GOOD
Fluorescence	NONE
Inscription(s)	LG579362541

Comments: As Grown - No indication of post-growth treatment. This Laboratory Grown Diamond was created by High Pressure High Temperature (HPHT) growth process.

**COUNTRY OF ORIGIN : UKRAINE**

Origin purported by the supplier

THIS DOCUMENT WAS PRODUCED WITH THE FOLLOWING SECURITY MEASURES: SPECIAL DOCUMENT PAPER, INK SCREENS, WATERMARK, BACKGROUND DESIGN, HOLOGRAM AND OTHER SECURITY FEATURES NOT LISTED AND DO EXCEED DOCUMENT SECURITY INDUSTRY GUIDELINES.

For terms & conditions and to verify this report, please visit [www.igi.org](http://www.igi.org)