



ELECTRONIC COPY

LABORATORY GROWN DIAMOND REPORT

LG576329310

Report verification at igi.org

LABORATORY GROWN
DIAMOND REPORT

LABORATORY GROWN DIAMOND REPORT

LABORATORY GROWN DIAMOND REPORT

April 6, 2023
IGI Report Number **LG576329310**
Description **LABORATORY GROWN
DIAMOND**
Shape and Cutting Style **CUSHION BRILLIANT**
Measurements **9.29 X 7.76 X 5.05 MM**

GRADING RESULTS

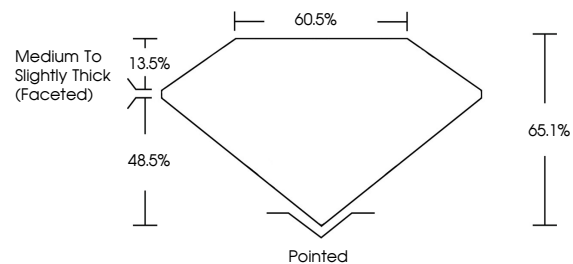
Carat Weight **3.05 CARATS**
Color Grade **F**
Clarity Grade **VS 1**

ADDITIONAL GRADING INFORMATION

Polish **EXCELLENT**
Symmetry **EXCELLENT**
Fluorescence **NONE**
Inscription(s) **IGI LG576329310**

Comments: This Laboratory Grown Diamond was created by Chemical Vapor Deposition (CVD) growth process and may include post-growth treatment. Type IIa

PROPORTIONS



CLARITY CHARACTERISTICS



KEY TO SYMBOLS

Red symbols indicate internal characteristics.
Green symbols indicate external characteristics.

GRADING SCALES

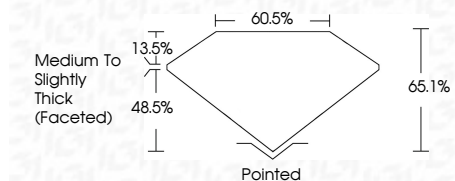
CLARITY

IF	VVS ¹⁻²	VS ¹⁻²	SI ¹⁻²	I ¹⁻³
Internally Flawless	Very Very Slightly Included	Very Slightly Included	Slightly Included	Included

COLOR

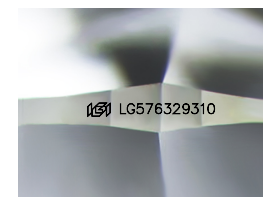
D	E	F	G	H	I	J	Faint	Very Light	Light
---	---	---	---	---	---	---	-------	------------	-------

April 6, 2023
IGI Report Number **LG576329310**
Description **LABORATORY GROWN
DIAMOND**
Shape and Cutting Style **CUSHION BRILLIANT**
Measurements **9.29 X 7.76 X 5.05 MM**
GRADING RESULTS
Carat Weight **3.05 CARATS**
Color Grade **F**
Clarity Grade **VS 1**



ADDITIONAL GRADING INFORMATION

Polish **EXCELLENT**
Symmetry **EXCELLENT**
Fluorescence **NONE**
Inscription(s) **IGI LG576329310**
Comments: This Laboratory Grown Diamond was created by Chemical Vapor Deposition (CVD) growth process and may include post-growth treatment. Type IIa



Sample Image Used



IGI

April 6, 2023
IGI Report No LG576329310
CUSHION BRILLIANT
9.29 X 7.76 X 5.05 MM
3.05 CARATS
F
Color Grade
VS 1
Clarity Grade
65.1%
Depth
60.5%
Table
Medium to Slightly Thick (Faceted)
Pointed
EXCELLENT
Polish
EXCELLENT
Symmetry
NONE
Fluorescence
IGI LG576329310
Inscription(s)

Comments: This Laboratory Grown Diamond was created by Chemical Vapor Deposition (CVD) growth process and may include post-growth treatment. Type IIa