



**ELECTRONIC COPY**

## LABORATORY GROWN DIAMOND REPORT

April 6, 2023	
IGI Report Number	LG575380525
Description	LABORATORY GROWN DIAMOND
Shape and Cutting Style	ROUND BRILLIANT
Measurements	12.93 - 12.99 X 7.73 MM

## GRADING RESULTS

Carat Weight	7.85 CARATS
Color Grade	F
Clarity Grade	VS 2
Cut Grade	EXCELLENT

### ADDITIONAL GRADING INFORMATION

Polish	EXCELLENT
Symmetry	EXCELLENT
Fluorescence	NONE
Inscription(s)	15 LG575380525

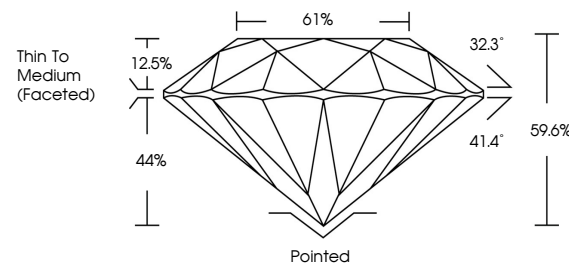
Comments: This Laboratory Grown Diamond was created by Chemical Vapor Deposition (CVD) growth process and may include post-growth treatment.  
Type IIa

## LABORATORY GROWN DIAMOND REPORT

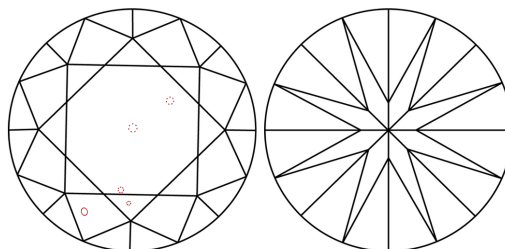
LG575380525

Report verification at [igi.org](http://igi.org)

## PROPORTIONS



## CLARITY CHARACTERISTICS



## KEY TO SYMBOLS

Red symbols indicate internal characteristics.  
Green symbols indicate external characteristics.

LABORATORY GROWN  
DIAMOND REPORT

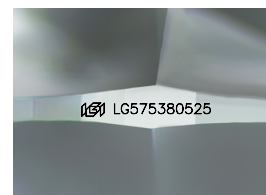
## GRADING SCALES

## CLARITY

IF	VVS <sup>1-2</sup>	VS <sup>1-2</sup>	SI <sup>1-2</sup>	I <sup>1-3</sup>
Internally Flawless	Very Very Slightly Included	Very Slightly Included	Slightly Included	Included

**COLOR**

D E F G H I J Faint Very Light Light



Sample Image Used

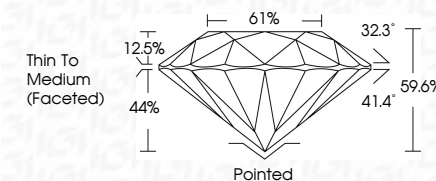


© IGI 2020, International Gemological Institute

FD - 10 20



April 6, 2023	
IGI Report Number	LG575380525
Description	LABORATORY GROWN DIAMOND
Shape and Cutting Style	ROUND BRILLIANT
Measurements	12.93 - 12.99 X 7.73 MM
<b>GRADING RESULTS</b>	
Carat Weight	7.85 CARATS
Color Grade	F
Clarity Grade	VS 2
Cut Grade	EXCELLENT



### ADDITIONAL GRADING INFORMATION

Polish	EXCELLENT
Symmetry	EXCELLENT
Fluorescence	NONE
Inscription(s)	(16) LG575380525

Comments: This Laboratory Grown Diamond was created by Chemical Vapor Deposition (CVD) growth process and may include post-growth treatment.  
Type IIa

April 6, 2023	GI Report No. LG575300625	7.85 CARATS	F
ROUND BRILLIANT			VS 2
			EXCELLENT
			59.6%
			61%
			Thin To Medium (Faceted)
			Polished
			EXCELLENT
			NONE
			1651 LG575300625

Comments: Crown Diamond was created by Chemical Vapor Deposition (CVD) growth process and may include post-growth treatment.

Type IIA