



INTERNATIONAL GEMOLOGICAL INSTITUTE

ELECTRONIC COPY

LABORATORY GROWN DIAMOND REPORT

LG574355064

LABORATORY GROWN DIAMOND REPORT

IGI LABORATORY GROWN DIAMOND IDENTIFICATION REPORT

April 11, 2023
IGI Report Number LG574355064
Description LABORATORY GROWN DIAMOND
Shape and Cutting Style ROUND BRILLIANT
Measurements 4.89 - 4.91 X 2.97 MM

GRADING RESULTS

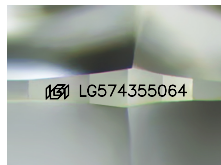
Carat Weight 0.44 CARAT
Color Grade FANCY VIVID PINK
Clarity Grade VS 2
Cut Grade IDEAL

ADDITIONAL GRADING INFORMATION

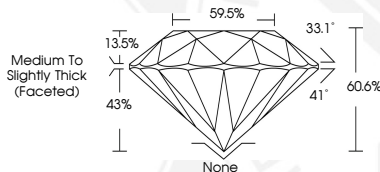
Polish VERY GOOD
Symmetry VERY GOOD
Fluorescence SLIGHT
Inscription(s) IGI LG574355064

Comments: This Laboratory Grown Diamond was created by High Pressure High Temperature (HPHT) growth process. Indications of post-growth treatment.

Secondary color: Purple



Sample Image Used



IGI LABORATORY GROWN DIAMOND ID REPORT

April 11, 2023
IGI Report Number LG574355064
ROUND BRILLIANT
4.89 - 4.91 X 2.97 MM
Carat Weight 0.44 CARAT
Color Grade FANCY VIVID PINK
Clarity Grade VS 2
Cut Grade IDEAL
Polish VERY GOOD
Symmetry VERY GOOD
Fluorescence SLIGHT
Inscription(s) IGI LG574355064
Comments: This Laboratory Grown Diamond was created by High Pressure High Temperature (HPHT) growth process. Indications of post-growth treatment. Secondary color: Purple

IGI LABORATORY GROWN DIAMOND ID REPORT

April 11, 2023
IGI Report Number LG574355064
ROUND BRILLIANT
4.89 - 4.91 X 2.97 MM
Carat Weight 0.44 CARAT
Color Grade FANCY VIVID PINK
Clarity Grade VS 2
Cut Grade IDEAL
Polish VERY GOOD
Symmetry VERY GOOD
Fluorescence SLIGHT
Inscription(s) IGI LG574355064
Comments: This Laboratory Grown Diamond was created by High Pressure High Temperature (HPHT) growth process. Indications of post-growth treatment. Secondary color: Purple



THIS DOCUMENT WAS PRODUCED WITH THE FOLLOWING SECURITY MEASURES: SPECIAL DOCUMENT PAPER, INK SCREENS, WATERMARK, BACKGROUND DESIGN, HOLOGRAM AND OTHER SECURITY FEATURES NOT LISTED AND DO EXCEED DOCUMENT SECURITY INDUSTRY GUIDELINES.

For terms & conditions and to verify this report, please visit www.igi.org