



**ELECTRONIC COPY**

## LABORATORY GROWN DIAMOND REPORT

March 21, 2023	
IGI Report Number	LG573398572
Description	LABORATORY GROWN DIAMOND
Shape and Cutting Style	EMERALD CUT
Measurements	6.60 X 4.61 X 3.24 MM

## GRADING RESULTS

Carat Weight	1.01 CARAT
Color Grade	D
Clarity Grade	VS 2

### ADDITIONAL GRADING INFORMATION

Polish	EXCELLENT
Symmetry	VERY GOOD
Fluorescence	NONE
Inscription(s)	 LG573398572

Comments: As Grown - No indication of post-growth treatment.

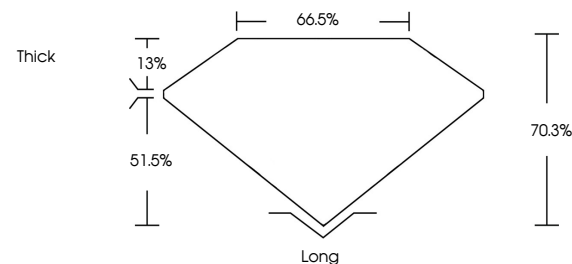
This Laboratory Grown Diamond was created by High Pressure High Temperature (HPHT) growth process.  
Type II

## LABORATORY GROWN DIAMOND REPORT

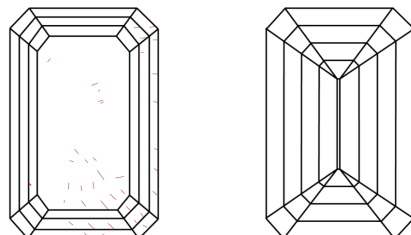
LG573398572

Report verification at [igi.org](http://igi.org)

## PROPORTIONS



## CLARITY CHARACTERISTICS



### KEY TO SYMBOLS

Red symbols indicate internal characteristics.  
Green symbols indicate external characteristics.

LABORATORY GROWN  
DIAMOND REPORT

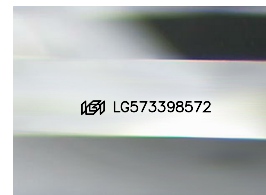
## GRADING SCALES

## CLARITY

IF	VVS <sup>1-2</sup>	VS <sup>1-2</sup>	SI <sup>1-2</sup>	I <sup>1-3</sup>
Internally Flawless	Very Very Slightly Included	Very Slightly Included	Slightly Included	Included

**COLOR**

D E F G H I J Faint Very Light Light



Sample Image Used



© IGI 2020, International Gemological Institute

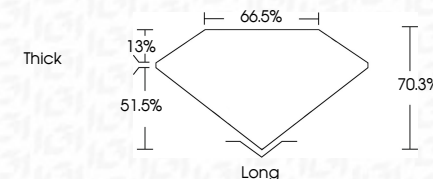
FD - 10 20



THIS DOCUMENT WAS PRODUCED WITH THE FOLLOWING SECURITY MEASURES: SPECIAL DOCUMENT PAPER, INK SCREENS, WATERMARK, BACKGROUND DESIGNS, HOLOGRAM AND OTHER SECURITY FEATURES NOT LISTED AND DO EXCEED DOCUMENT SECURITY INDUSTRY GUIDELINE

## LABORATORY GROWN DIAMOND REPORT

March 21, 2023	
IGI Report Number	LG573398572
Description	LABORATORY GROWN DIAMOND
Shape and Cutting Style	EMERALD CUT
Measurements	6.60 X 4.61 X 3.24 MM
<b>GRADING RESULTS</b>	
Carat Weight	1.01 CARAT
Color Grade	D
Clarity Grade	VS 2



### ADDITIONAL GRADING INFORMATION

Polish	EXCELLENT
Symmetry	VERY GOOD
Fluorescence	NONE
Inscription(s)	(16) LG573398572

Comments: As Grown - No indication of post-growth treatment.

This Laboratory Grown Diamond was created by High Pressure High Temperature (HPHT) growth process.  
Type II



March 21, 2023  
GJ Report No 1G573398572

<p> <b>GENERAL CUT</b>  <b>GI Report No G573998572</b> </p>	<p> <b>6.60 X 4.61 X 3.24 MM</b>  <b>1.01 CARAT</b> </p>	<p> <b>Color Grade</b>  <b>D</b> </p>	<p> <b>Clarity Grade</b>  <b>VS 2</b> </p>	<p> <b>Depth</b>  <b>70.3%</b> </p>	<p> <b>Table</b>  <b>66.5%</b> </p>	<p> <b>Girdle</b>  <b>Thick</b> </p>	<p> <b>Culet</b>  <b>Long</b> </p>	<p> <b>Polish</b>  <b>EXCELLENT</b> </p>	<p> <b>Symmetry</b>  <b>VERY GOOD</b> </p>	<p> <b>Fluorescence</b>  <b>NONE</b> </p>	<p> <b>Lab #</b> G573998572 </p>
---	--	---	--	---	---	--	--	--	--	---	----------------------------------

**Comments:**  
As Grown - No indication of post-growth treatment.  
This Laboratory Grown Diamond was created by High Pressure High Temperature (HPHT) growth process.