

**ELECTRONIC COPY**

## LABORATORY GROWN DIAMOND REPORT

|                         |  |
|-------------------------|--|
| March 21, 2023          |  |
| IGI Report Number       | LG573309710                                    |
| Description             | LABORATORY GROWN<br>DIAMOND                    |
| Shape and Cutting Style | CUT CORNERED RECTANGULAR<br>MODIFIED BRILLIANT |
| Measurements            | 8.25 X 5.83 X 3.95 MM                          |

## GRADING RESULTS

|               |            |
|---------------|------------|
| Carat Weight  | 1.58 CARAT |
| Color Grade   | F          |
| Clarity Grade | VVS 2      |

### ADDITIONAL GRADING INFORMATION

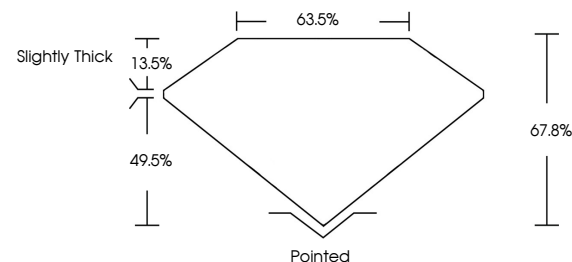
|                |                |
|----------------|----------------|
| Polish         | EXCELLENT      |
| Symmetry       | EXCELLENT      |
| Fluorescence   | NONE           |
| Inscription(s) | 15 LG573309710 |

Comments: This Laboratory Grown Diamond was created by Chemical Vapor Deposition (CVD) growth process and may include post-growth treatment.  
Type IIa

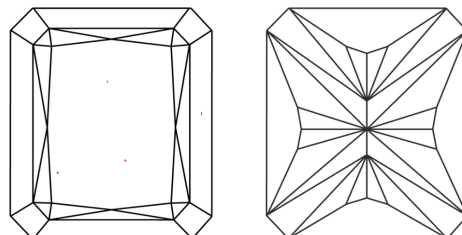
## LABORATORY GROWN DIAMOND REPORT

LG573309710  
Report verification at [igi.org](https://www.igi.org)

## PROPORTIONS



## CLARITY CHARACTERISTICS



### KEY TO SYMBOLS

Red symbols indicate internal characteristics.  
Green symbols indicate external characteristics.

LABORATORY GROWN  
DIAMOND REPORT

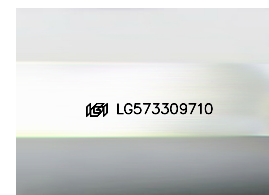
## GRADING SCALES

## CLARITY

| IF                     | VVS <sup>1-2</sup>             | VS <sup>1-2</sup>         | SI <sup>1-2</sup>    | I <sup>1-3</sup> |
|------------------------|--------------------------------|---------------------------|----------------------|------------------|
| Internally<br>Flawless | Very Very<br>Slightly Included | Very<br>Slightly Included | Slightly<br>Included | Included         |

**COLOR**

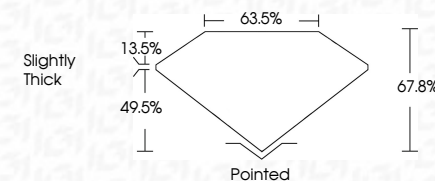
D E F G H I J Faint Very Light Light



Sample Image Used

## LABORATORY GROWN DIAMOND REPORT

|                         |   |
|-------------------------|---|
| March 21, 2023          |   |
| IGI Report Number       | LG573309710                                       |
| Description             | LABORATORY GROWN<br>DIAMOND                       |
| Shape and Cutting Style | CUT CORNERED<br>RECTANGULAR MODIFIED<br>BRILLIANT |
| Measurements            | 8.25 X 5.83 X 3.95 MM                             |
| <b>GRADING RESULTS</b>  |   |
| Carat Weight            | 1.58 CARAT  |
| Color Grade             | F   |
| Clarity Grade           | VVS 2   |



### ADDITIONAL GRADING INFORMATION

|   |                            |
|---|----------------------------|
| Polish  | EXCELLENT                  |
| Symmetry  | EXCELLENT                  |
| Fluorescence  | NONE                       |
| Inscription(s)  | <del>153</del> LG573309710 |
| <p>Comments: This Laboratory Grown Diamond was created by Chemical Vapor Deposition (CVD) growth process and may include post-growth treatment.</p> <p>Type IIa</p> |                            |

