

INTERNATIONAL
GEMOLOGICAL
INSTITUTE

ELECTRONIC COPY

LABORATORY GROWN DIAMOND REPORT

February 13, 2023

IGI Report Number
LG569307670

Description
LABORATORY GROWN
DIAMOND

Shape and Cutting Style
EMERALD CUT

Measurements
7.85 X 5.47 X 3.63 MM

GRADING RESULTS

Carat Weight
1.53 CARAT

Color Grade
F

Clarity Grade
VS 1

ADDITIONAL GRADING INFORMATION

Polish
EXCELLENT

Symmetry
VERY GOOD

Fluorescence
NONE

Inscription(s)
IGI LG569307670

Comments: This Laboratory Grown Diamond was created by Chemical Vapor Deposition (CVD) growth process and may include post-growth treatment. Type IIa

LABORATORY GROWN DIAMOND REPORT

February 13, 2023

IGI Report Number
LG569307670

Description
LABORATORY GROWN
DIAMOND

Shape and Cutting Style
EMERALD CUT

Measurements
7.85 X 5.47 X 3.63 MM

GRADING RESULTS

Carat Weight
1.53 CARAT

Color Grade
F

Clarity Grade
VS 1

ADDITIONAL GRADING INFORMATION

Polish
EXCELLENT

Symmetry
VERY GOOD

Fluorescence
NONE

Inscription(s)
IGI LG569307670

Comments: This Laboratory Grown Diamond was created by Chemical Vapor Deposition (CVD) growth process and may include post-growth treatment. Type IIa

LABORATORY GROWN DIAMOND REPORT

February 13, 2023

IGI Report No LG569307670

EMERALD CUT

7.85 X 5.47 X 3.63 MM

Carat Weight
1.53 CARAT

Color Grade
F

Clarity Grade
VS 1

Depth
66.4%

Table
65%

Graile
Medium to Slightly Thick

Culet
Long

Polish
EXCELLENT

Symmetry
VERY GOOD

Fluorescence
NONE

Inscription(s)
IGI LG569307670

Comments: This Laboratory Grown Diamond was created by Chemical Vapor Deposition (CVD) growth process and may include post-growth treatment. Type IIa

LABORATORY GROWN DIAMOND REPORT

February 13, 2023

IGI Report No LG569307670

EMERALD CUT

7.85 X 5.47 X 3.63 MM

Carat Weight
1.53 CARAT

Color Grade
F

Clarity Grade
VS 1

Depth
66.4%

Table
65%

Graile
Medium to Slightly Thick

Culet
Long

Polish
EXCELLENT

Symmetry
VERY GOOD

Fluorescence
NONE

Inscription(s)
IGI LG569307670

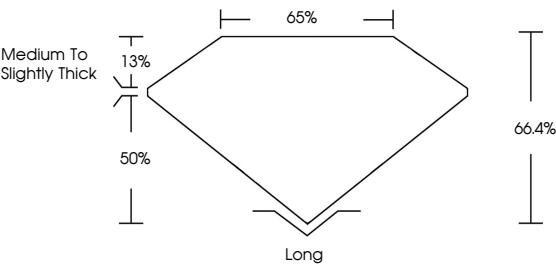
Comments: This Laboratory Grown Diamond was created by Chemical Vapor Deposition (CVD) growth process and may include post-growth treatment. Type IIa

LABORATORY GROWN DIAMOND REPORT

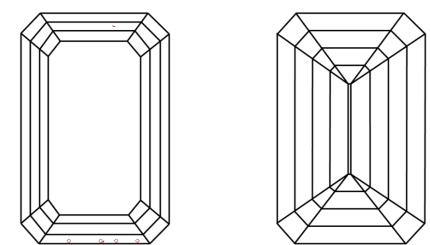
LG569307670

Report verification at [igi.org](https://www.igi.org)

PROPORTIONS



CLARITY CHARACTERISTICS



KEY TO SYMBOLS

Red symbols indicate internal characteristics.
Green symbols indicate external characteristics.

LABORATORY GROWN DIAMOND REPORT

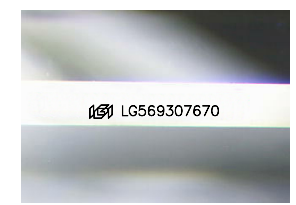
GRADING SCALES

CLARITY

IF	VVS ¹⁻²	VS ¹⁻²	SI ¹⁻²	I ¹⁻³
Internally Flawless	Very Very Slightly Included	Very Slightly Included	Slightly Included	Included

COLOR

D	E	F	G	H	I	J	Faint	Very Light	Light
---	---	---	---	---	---	---	-------	------------	-------



Sample Image Used

LABORATORY GROWN DIAMOND REPORT

February 13, 2023

IGI Report Number
LG569307670

Description
LABORATORY GROWN
DIAMOND

Shape and Cutting Style
EMERALD CUT

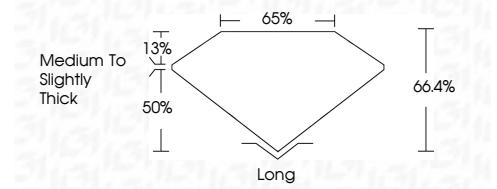
Measurements
7.85 X 5.47 X 3.63 MM

GRADING RESULTS

Carat Weight
1.53 CARAT

Color Grade
F

Clarity Grade
VS 1



ADDITIONAL GRADING INFORMATION

Polish
EXCELLENT

Symmetry
VERY GOOD

Fluorescence
NONE

Inscription(s)
IGI LG569307670

Comments: This Laboratory Grown Diamond was created by Chemical Vapor Deposition (CVD) growth process and may include post-growth treatment. Type IIa



February 13, 2023

IGI Report No LG569307670

EMERALD CUT

7.85 X 5.47 X 3.63 MM

Carat Weight
1.53 CARAT

Color Grade
F

Clarity Grade
VS 1

Depth
66.4%

Table
65%

Graile
Medium to Slightly Thick

Culet
Long

Polish
EXCELLENT

Symmetry
VERY GOOD

Fluorescence
NONE

Inscription(s)
IGI LG569307670

Comments: This Laboratory Grown Diamond was created by Chemical Vapor Deposition (CVD) growth process and may include post-growth treatment. Type IIa