



ELECTRONIC COPY

LABORATORY GROWN DIAMOND REPORT

| | |
|-------------------------|-----------------------------|
| February 15, 2023 | |
| IGI Report Number | LG566316947 |
| Description | LABORATORY GROWN DIAMOND |
| Shape and Cutting Style | EMERALD CUT |
| Measurements | 7.24 X 4.69 X 3.01 MM |

GRADING RESULTS

| | |
|---------------|--------------------|
| Carat Weight | 1.03 CARAT |
| Color Grade | FANCY INTENSE BLUE |
| Clarity Grade | VVS 2 |

ADDITIONAL GRADING INFORMATION

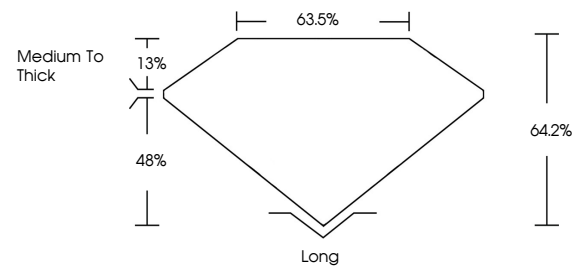
| | |
|----------------|---|
| Polish | EXCELLENT |
| Symmetry | EXCELLENT |
| Fluorescence | NONE |
| Inscription(s) |  LG566316947 |

Comments: This Laboratory Grown Diamond was created by Chemical Vapor Deposition (CVD) growth process.
Indications of post-growth treatment.

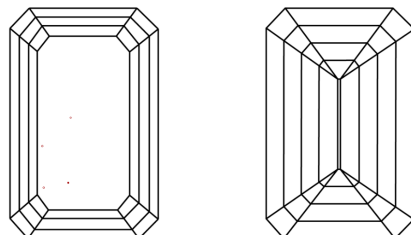
LABORATORY GROWN DIAMOND REPORT

LG566316947
Report verification at igi.org

PROPORTIONS



CLARITY CHARACTERISTICS



KEY TO SYMBOLS

Red symbols indicate internal characteristics.
Green symbols indicate external characteristics.

LABORATORY GROWN
DIAMOND REPORT

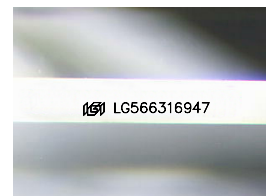
GRADING SCALES

CLARITY

| IF | VVS ¹⁻² | VS ¹⁻² | SI ¹⁻² | I ¹⁻³ |
|---------------------|-----------------------------|------------------------|-------------------|------------------|
| Internally Flawless | Very Very Slightly Included | Very Slightly Included | Slightly Included | Included |

COLOR

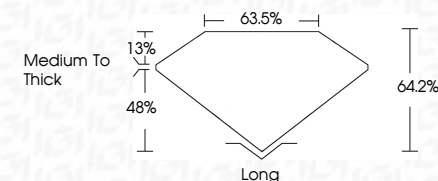
| | | | | | | | | | |
|------------|---|---|-------------|---|-------|---|---------------|------------|-------------|
| D | E | F | G | H | I | J | Faint | Very Light | Light |
| Light Tint | | | Fancy Light | | Fancy | | Fancy Intense | | Fancy Vivid |



Sample Image Used



| | |
|-------------------------|-----------------------------|
| February 15, 2023 | |
| IGI Report Number | LG566316947 |
| Description | LABORATORY GROWN DIAMOND |
| Shape and Cutting Style | EMERALD CUT |
| Measurements | 7.24 X 4.69 X 3.01 MM |
| GRADING RESULTS | |
| Carat Weight | 1.03 CARAT |
| Color Grade | FANCY INTENSE BLUE |
| Clarity Grade | VVS 2 |



ADDITIONAL GRADING INFORMATION

| | |
|----------------|------------------|
| Polish | EXCELLENT |
| Symmetry | EXCELLENT |
| Fluorescence | NONE |
| Inscription(s) | (15) LG566316947 |

Comments: This Laboratory Grown Diamond was created by Chemical Vapor Deposition (CVD) growth process.
Indications of post-growth treatment.



© IGI 2020, International Gemological Institute

FD - 10 20

www.igi.org

THIS DOCUMENT WAS PRODUCED WITH THE FOLLOWING SECURITY MEASURES: SPECIAL DOCUMENT PAPER, INK SCREENS, WATERMARK, BACKGROUND DESIGNS, HOLOGRAM AND OTHER SECURITY FEATURES NOT LISTED AND DO EXCEED DOCUMENT SECURITY INDUSTRY GUIDELINES

February 15, 2023
 IGI Report No LG566316947
 EMERALD CIT

| | | |
|-----------------------|---------------|--------------------|
| 2.24 X 4.69 X 3.01 MM | Carat Weight | 1.08 CARAT |
| | Color Grade | FANCY INTENSE BLUE |
| | Clarity Grade | VVS 2 |
| | Depth | 64.2% |
| | Table | 63.6% |
| | Grade | Medium To Thick |
| | Quiet | Long |
| | Polish | EXCELLENT |
| | Symmetry | EXCELLENT |
| | Fluorescence | NONE |
| | Report | GR1 5564543 10007 |

Comments:
This Laboratory Grown Diamond was created by Chemical Vapor Deposition (CVD) growth process.
indications of post-growth treatment.