



**INTERNATIONAL  
GEMOLOGICAL  
INSTITUTE**

**ELECTRONIC COPY**

**LABORATORY GROWN  
DIAMOND REPORT**

**LG564379387**

**IGI LABORATORY GROWN  
DIAMOND ID REPORT**

March 24, 2023  
IGI Report Number **LG564379387**  
**ROUND BRILLIANT**  
**5.85 - 5.89 X 3.68 MM**  
Carat Weight 0.80 CARAT  
Color Grade FANCY INTENSE  
BLUE  
Clarity Grade VS 1  
Cut Grade EXCELLENT  
Polish EXCELLENT  
Symmetry EXCELLENT  
Fluorescence NONE  
Inscription(s) LG564379387

Comments: As Grown - No indication of post-growth treatment. This Laboratory Grown Diamond was created by High Pressure High Temperature (HPHT) growth process.

**LABORATORY GROWN DIAMOND REPORT**

**IGI LABORATORY GROWN DIAMOND IDENTIFICATION REPORT**

March 24, 2023  
IGI Report Number LG564379387  
Description LABORATORY GROWN DIAMOND  
Shape and Cutting Style ROUND BRILLIANT  
Measurements 5.85 - 5.89 X 3.68 MM

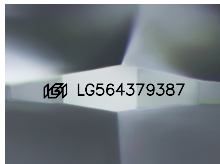
**GRADING RESULTS**

Carat Weight 0.80 CARAT  
Color Grade FANCY INTENSE BLUE  
Clarity Grade VS 1  
Cut Grade EXCELLENT

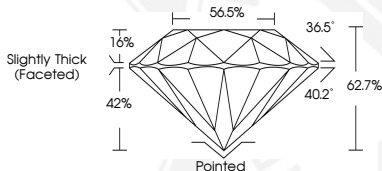
**ADDITIONAL GRADING INFORMATION**

Polish EXCELLENT  
Symmetry EXCELLENT  
Fluorescence NONE  
Inscription(s) LG564379387

Comments: As Grown - No indication of post-growth treatment. This Laboratory Grown Diamond was created by High Pressure High Temperature (HPHT) growth process.



Sample Image Used



**IGI LABORATORY GROWN  
DIAMOND ID REPORT**

March 24, 2023  
IGI Report Number **LG564379387**  
**ROUND BRILLIANT**  
**5.85 - 5.89 X 3.68 MM**  
Carat Weight 0.80 CARAT  
Color Grade FANCY INTENSE  
BLUE  
Clarity Grade VS 1  
Cut Grade EXCELLENT  
Polish EXCELLENT  
Symmetry EXCELLENT  
Fluorescence NONE  
Inscription(s) LG564379387

Comments: As Grown - No indication of post-growth treatment. This Laboratory Grown Diamond was created by High Pressure High Temperature (HPHT) growth process.



THIS DOCUMENT WAS PRODUCED WITH THE FOLLOWING SECURITY MEASURES: SPECIAL DOCUMENT PAPER, INK SCREENS, WATERMARK, BACKGROUND DESIGN, HOLOGRAM AND OTHER SECURITY FEATURES NOT LISTED AND DO EXCEED DOCUMENT SECURITY INDUSTRY GUIDELINES.

For terms & conditions and to verify this report, please visit [www.igi.org](http://www.igi.org)